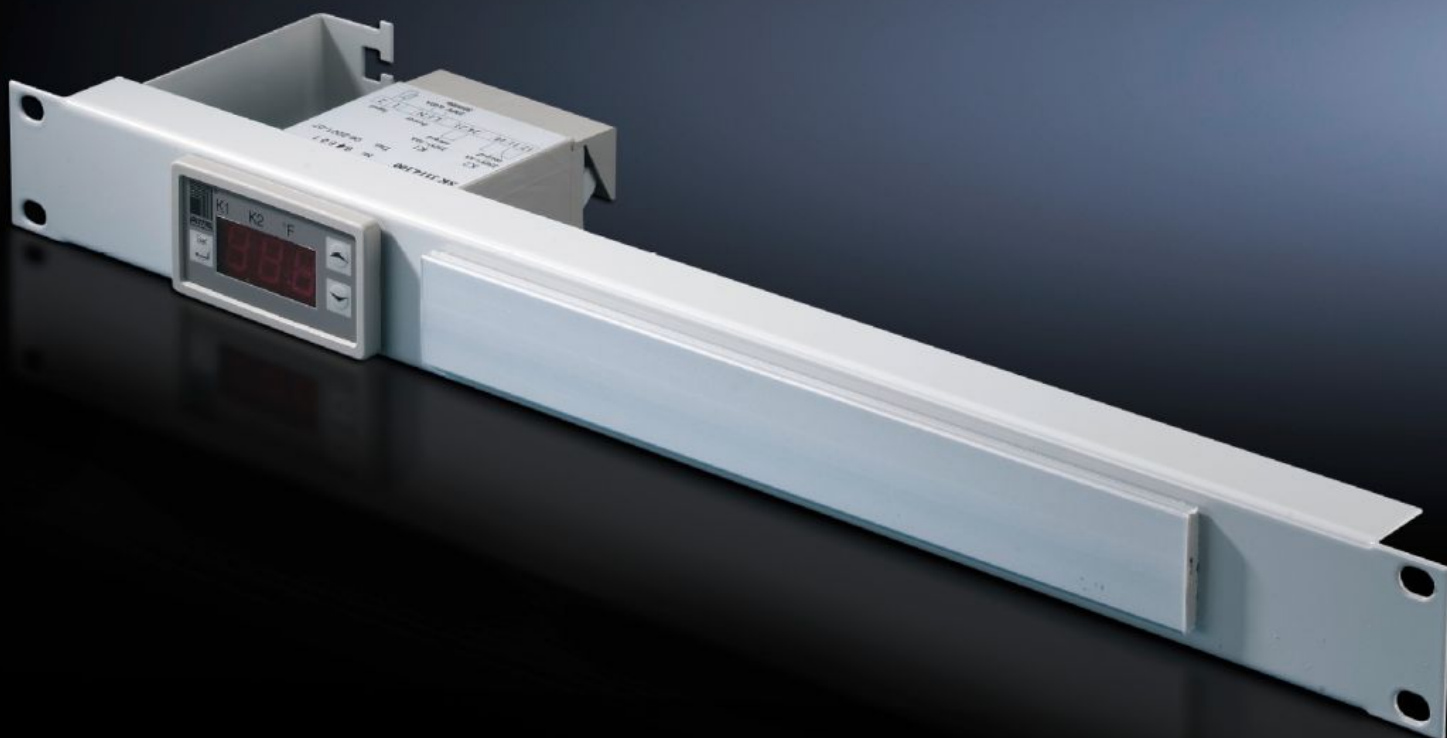


Rittal – The System.

Faster – better – everywhere.



SK 7109.035

Digital enclosure internal temperature display and thermostat

State: 11/08/2025 (Source: rittal.com/nz-en)

ENCLOSURES

POWER DISTRIBUTION

CLIMATE CONTROL

IT INFRASTRUCTURE

SOFTWARE & SERVICES

FRIEDHELM LOH GROUP



SK 7109.035 - Digital enclosure internal temperature display and thermostat integrated into a patch panel 1 U

Features

Model No.	SK 7109.035
Product description	Including cable attachment for connection cable and label holder.
Technical specifications	Three-digit, 7-segment display Option of switching between °C/°F Includes 1800 mm long NTC sensor Two relay outputs as change-over contact and normally open contact (max. contact load 230 V, 6 A) Freely selectable switching difference
Colour	RAL 7035
Packs of	1 pc(s).
Setting range	5 °C...55 °C
Rated operating voltage	100 V - 230 V, 1~, 50 Hz/60 Hz 24 V - 60 V (DC)
Net weight	0.72
Gross weight	0.86
Customs tariff number	94039910
EAN	4028177165649
ETIM 9	EC004587
ETIM 8	EC004587
ECLASS 8.0	27210707

Approvals

Approvals

Certificates

EAC

Tender text

Rittal patch panel with temperature display
and thermostat, RAL 7035

Small dimensions

Depth: 100 mm

„The three-digit, 7-segment display is 13 mm high and
easy to read

„can be switched between °C/°F

„The display can be used in temperatures ranging from
+5°C to +55°C

„With 1800 mm long NTC sensor

Rated operating voltage: 100 - 230 V, 50/60 Hz und 24 - 60 V (DC),
special voltages available on request.

„Two relay outputs used as change-over contacts (max.
contact load 230V, 6A)

„Switching difference can be freely selected

„The freely adjustable setpoint values can be set via
the membrane keyboard mounted at the front.

Setting range: +5°C to +55°C

„Display and switching accuracy ± 2 K

„Mounting cutout 68 x 33 mm

„Minimum and maximum recorded temperatures are saved
until the next reset.

Material: Spray finished in RAL 7035