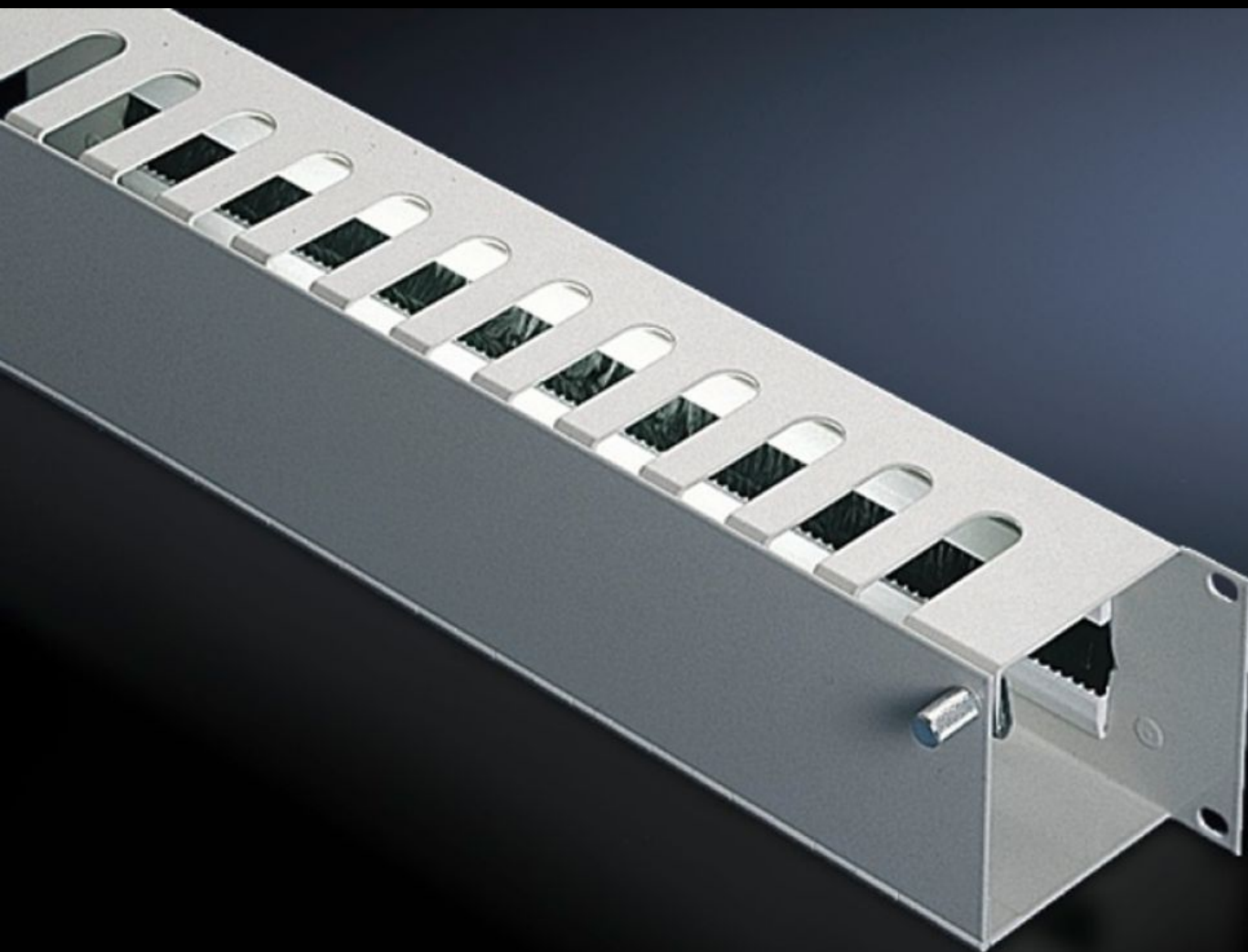


Rittal – The System.

Faster – better – everywhere.



DK 7158.035

Cable management panel

State: 13/07/2025 (Source: [rittal.com/nz-en](https://www.rittal.com/nz-en))

ENCLOSURES

POWER DISTRIBUTION

CLIMATE CONTROL

IT INFRASTRUCTURE

SOFTWARE & SERVICES

FRIEDHELM LOH GROUP



DK 7158.035 - Cable management panel with front flap

Cable routing chamber with cut-outs from above, equipped with a flap and quick-release fasteners at the front for optimum access, insertion from the rear via a cut-out with brush strips.

Features

Model No.	DK 7158.035
Product description	The cable routing chamber has cut-outs from above, into which the patch cables can be inserted. The cable management panel is equipped with a flap and quick-release fasteners at the front, for optimum access to the cables. From the rear, the cables can be inserted via a cut-out with brush strips.
Material	Sheet steel
Surface finish	Spray-finished
Colour	RAL 7035
Depth of bars	55 mm
Dimensions	Width: 482.6 mm
Units	2 U
Packs of	1 pc(s).
Net weight	1.684
Gross weight	1.746
Customs tariff number	94039910
EAN	4028177166684
ETIM 9	EC000322
ECLASS 8.0	27400604

Tender text

Cable management panel, 482.6 mm (19"), 2 U

482.6 mm (19") cable management panel, 2 U, with cable routing chamber for horizontal patch cable management.

There are cutouts in the upper section of the cable management panel and there is also a cutout fitted with a brush strip in the rear section of the cable management panel. A flap with quick-release fasteners enables the patch cable to be accessed from the front.

Material: Sheet steel

Colour: RAL 7035