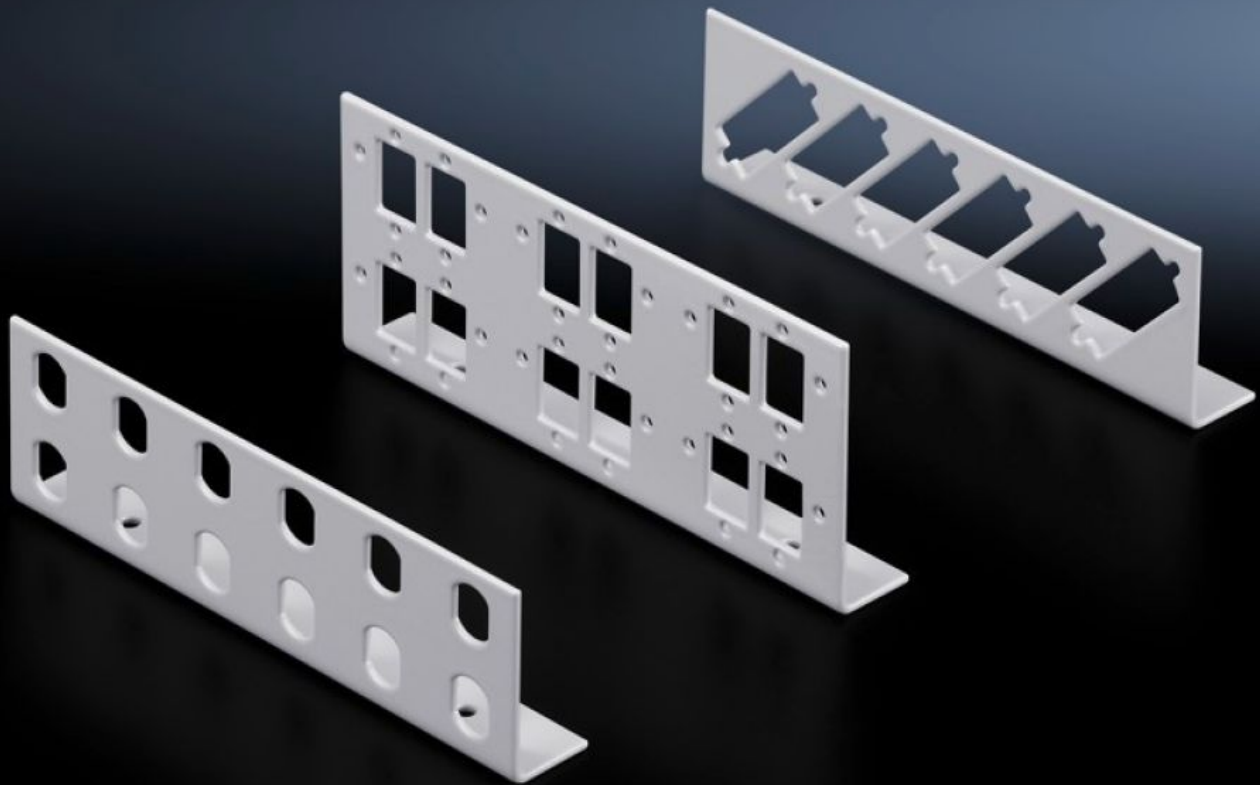


**Rittal – The System.**

Faster – better – everywhere.



**DK 7463.200**

# Patch panels for small fibre-optic distributors

State: 21/05/2026 (Source: [rittal.com/nz-en](http://rittal.com/nz-en))

ENCLOSURES

POWER DISTRIBUTION

CLIMATE CONTROL

IT INFRASTRUCTURE

SOFTWARE & SERVICES

FRIEDHELM LOH GROUP



# DK 7463.200 - Patch panels for small fibre-optic distributors

Patch panel for small fibre optic distributors for ST, SC, E-2000 and E-2000 duplex couplings.

## Features

Model No.	DK 7463.200
Product description	Various patch panels with different connector types are available for individual configuration of small fibre-optic distributors.
Material	Sheet steel
Colour	RAL 7035
Supply includes	Patch panel Assembly parts
Number of patch panels per enclosure (max.)	2
Basic material	Sheet steel
for fibre-optic coupling	SC duplex
Number of locations	Duplex: 6
Packs of	2 pc(s).
Net weight	0.09 kg
Gross weight	0.148 kg
PCF per pack (cradle-to-gate)	0.6 kg CO2 eq (Cat B)
Note on PCF category	Category B: PCF value (cradle-to-gate) based on the product weight, approximately calculated and self-declared
Customs tariff number	94039910
ETIM 9	EC001130
ECLASS 8.0	19170113
Product description	DK Patch panel, For small fibre-optic distributors, 6 x type: SC-Duplex

# Tender text

SC patch panel for 7451

Material: Sheet steel, spray finished in RAL 7035