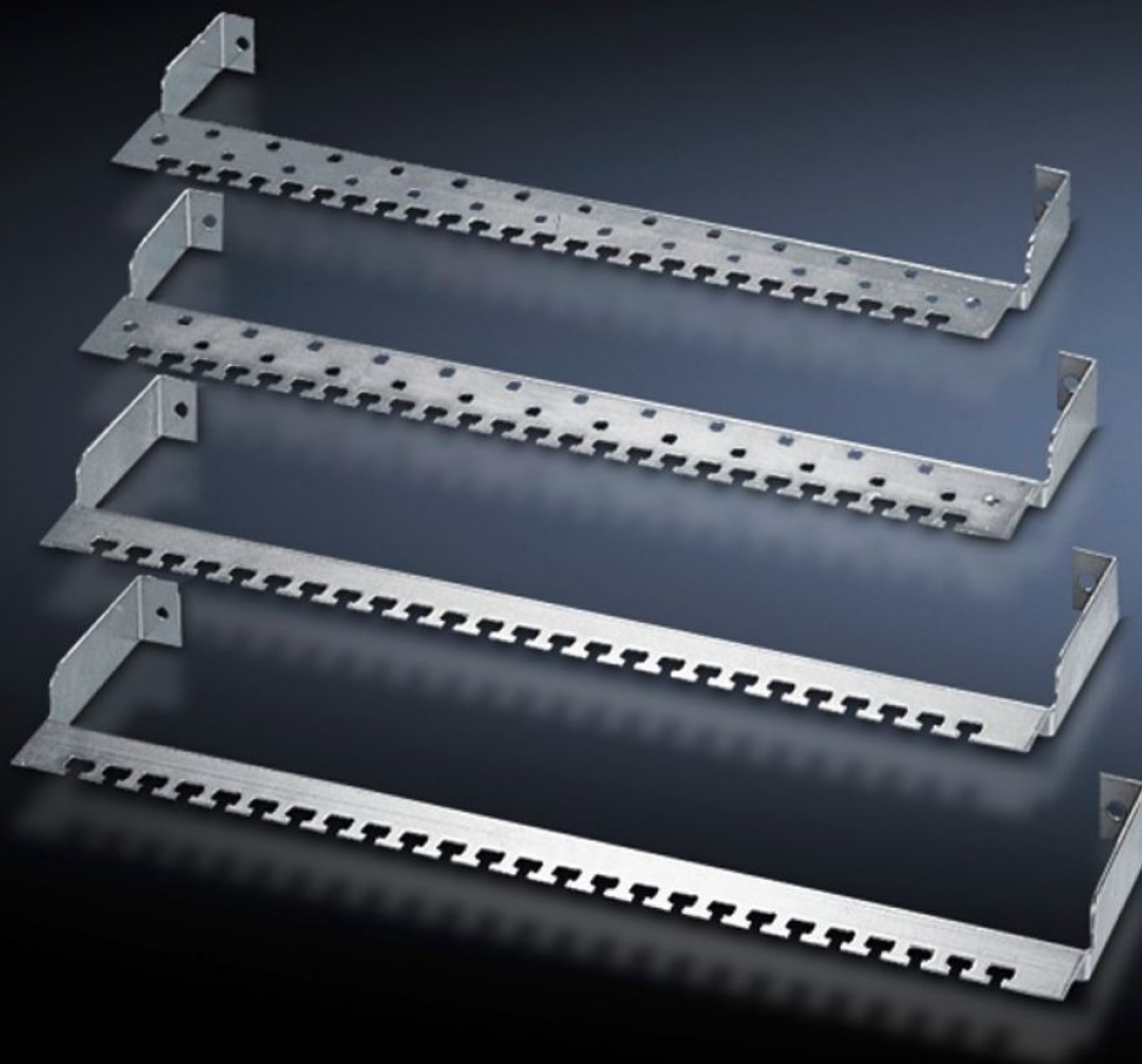
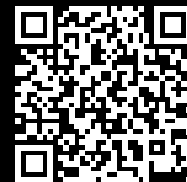


Rittal – The System.

Faster – better – everywhere.



DK 7611.000 Cable clamp rail

State: 18/07/2025 (Source: rittal.com/nz-en)

ENCLOSURES

POWER DISTRIBUTION

CLIMATE CONTROL

IT INFRASTRUCTURE

SOFTWARE & SERVICES

FRIEDHELM LOH GROUP



DK 7611.000 - Cable clamp rail for patch panels

To provide strain relief of incoming or outgoing data cables, optionally available with spring brackets for accommodating and contacting the cable screen.

Features

Model No.	DK 7611.000
Design	With spring clips for contacting the cable screen
Product description	To provide strain relief of incoming or outgoing data cables. Optionally available with spring brackets for accommodating and contacting the cable screen. Connection to the patch panel is by means of bolts on the panel itself.
Material	Sheet steel, 2 mm, zinc-plated
Supply includes	Assembly parts
Packs of	1 pc(s).
Net weight	0.52
Gross weight	0.629
Customs tariff number	73269098
EAN	4028177132528
ECLASS 8.0	27400604

Tender text

Cable clamp strap version (wide)

For mounting on the back of a CMC. The cable can be secured with cable ties or cable clamps. Spring clips can be used for making contact with the shielded cable and can be optionally attached to a 24V power pack.

Material: Sheet steel, zinc-plated, passivated