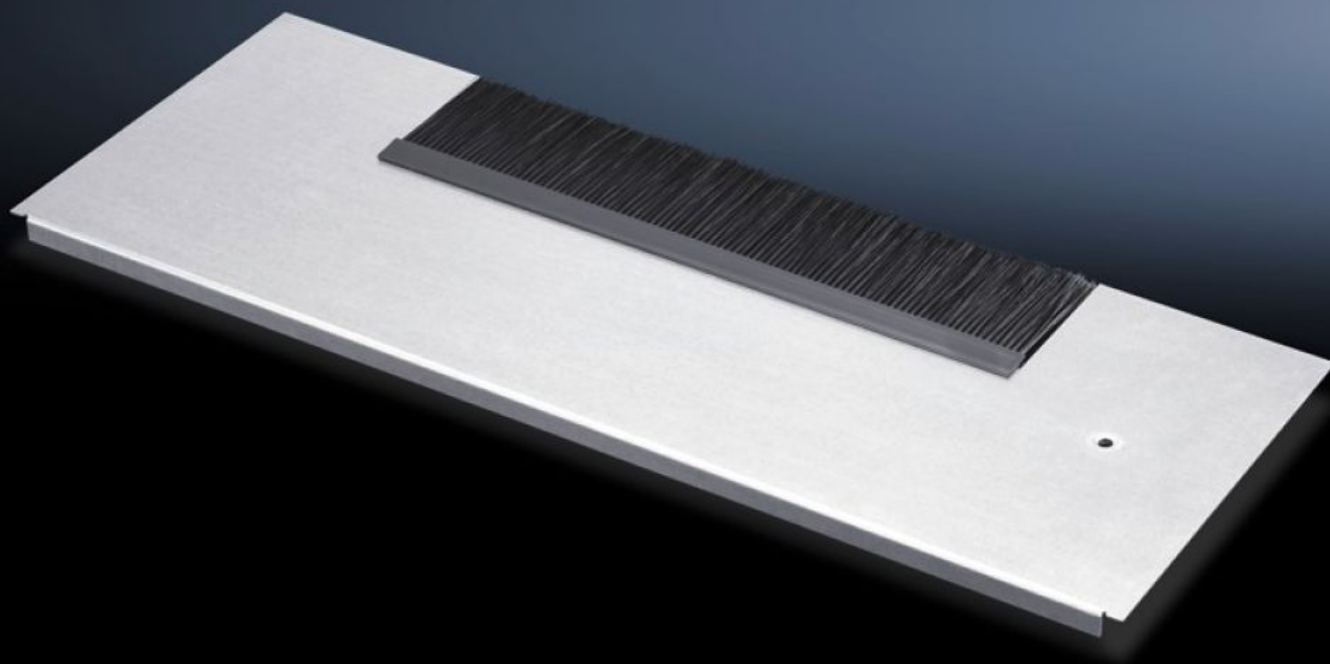


**Rittal – The System.**

Faster – better – everywhere.



**DK 7825.361**

**Gland plate modules for cable entry**

State: 26/07/2025 (Source: [rittal.com/nz-en](https://www.rittal.com/nz-en))

ENCLOSURES

POWER DISTRIBUTION

CLIMATE CONTROL

IT INFRASTRUCTURE

SOFTWARE & SERVICES

FRIEDHELM LOH GROUP



# DK 7825.361 - Gland plate modules for cable entry for TS IT, TS, SE, TX CableNet

Gland plate modules for cable entry, for TS, TS-IT, SE for use in the base frame of the network enclosure. Used in exchange for an existing gland plate of the same depth.

## Features

Model No.	DK 7825.361
Product description	For simple, sealed cable entry.
Material	Module plate: Sheet steel Brush strip: Plastic, UL 94 HB, halogen-free
Surface finish	Zinc-plated
Note	Several gland module plates need to be combined to close off the base completely in the TS-IT
Dimensions	Depth: 237.5 mm
To fit	Enclosure type: TS IT TS VX SE TX CableNet Width: 600 mm
Packs of	1 pc(s).
Net weight	1.092
Gross weight	1.24
Customs tariff number	73269098
EAN	4028177233331
ETIM 9	EC002620
ECLASS 8.0	27189261

## Tender text

Gland plate module, vented  
For W: 600 mm,  
Depth: 237,5 mm  
For TS, TS IT, SE, TX CableNet  
For cable entry with brush  
Module plate: Sheet steel  
Brush strip: UL 94-HB, halogen-free