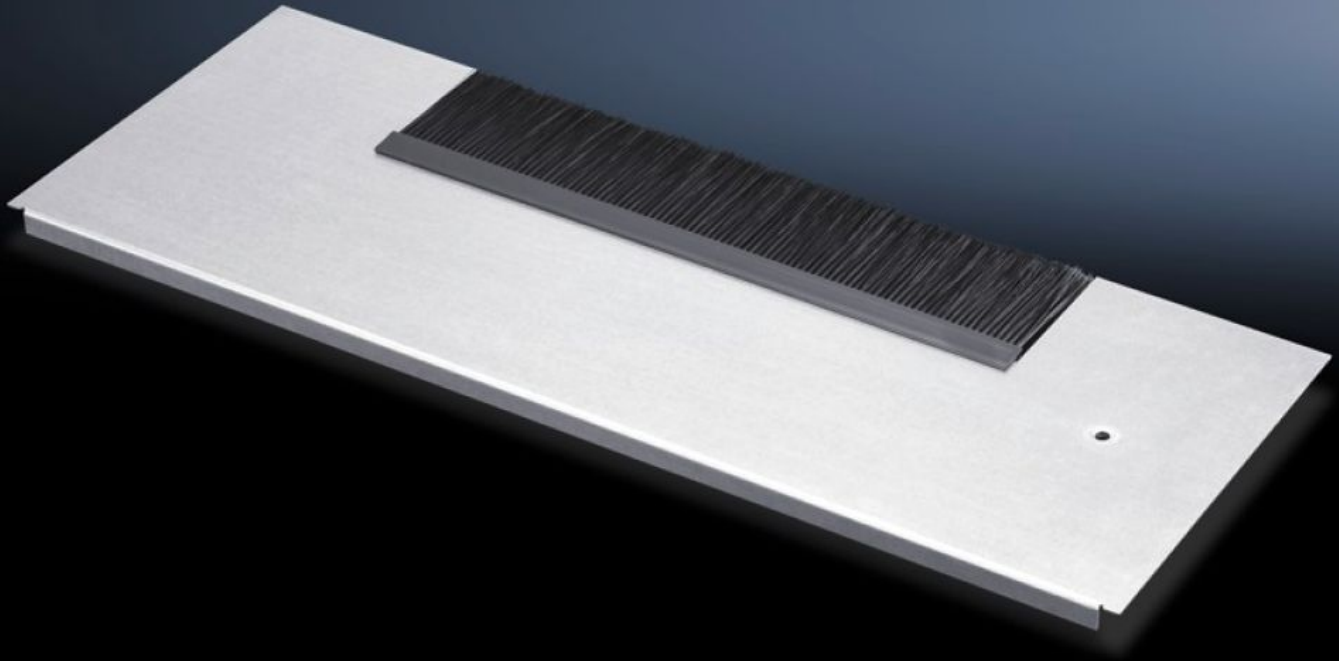


Rittal – The System.

Faster – better – everywhere.



DK 7825.381

Gland plate modules for cable entry

State: 10/07/2026 (Source: rittal.com/nz-en)

ENCLOSURES

POWER DISTRIBUTION

CLIMATE CONTROL

IT INFRASTRUCTURE

SOFTWARE & SERVICES

FRIEDHELM LOH GROUP



DK 7825.381 - Gland plate modules for cable entry for TS IT, TS, SE, TX CableNet

Gland plate modules for cable entry, for TS, TS-IT, SE for use in the base frame of the network enclosure. Used in exchange for an existing gland plate of the same depth.

Features

Model No.	DK 7825.381
Product description	For simple, sealed cable entry.
Material	Module plate: Sheet steel Brush strip: Plastic, UL 94 HB, halogen-free
Surface finish	Zinc-plated
Note	Several gland module plates need to be combined to close off the base completely in the TS-IT
Dimensions	Depth: 237.5 mm
To fit	Enclosure type: TS IT TS VX SE TX CableNet Width: 800 mm
Packs of	1 pc(s).
Net weight	1.75 kg
Gross weight	1.78 kg
PCF per pack (cradle-to-gate)	7.4 kg CO2 eq (Cat B)
Note on PCF category	Category B: PCF value (cradle-to-gate) based on the product weight, approximately calculated and self-declared
Customs tariff number	94039910
ETIM 9	EC002620
ECLASS 8.0	27189261

Features

Product description

DK Gland plate module, for cable entry with brush strip, depth: 237.5 mm, for enclosure width: 800 mm, for TS, TS IT, SE, TX CableNet, sheet steel, zinc-plated

Tender text

Gland plate module, vented

For W: 800 mm,

Depth: 237,5 mm

For TS, TS IT, SE, TX CableNet

For cable entry with brush

Module plate: Sheet steel

Brush strip: UL 94-HB, halogen-free