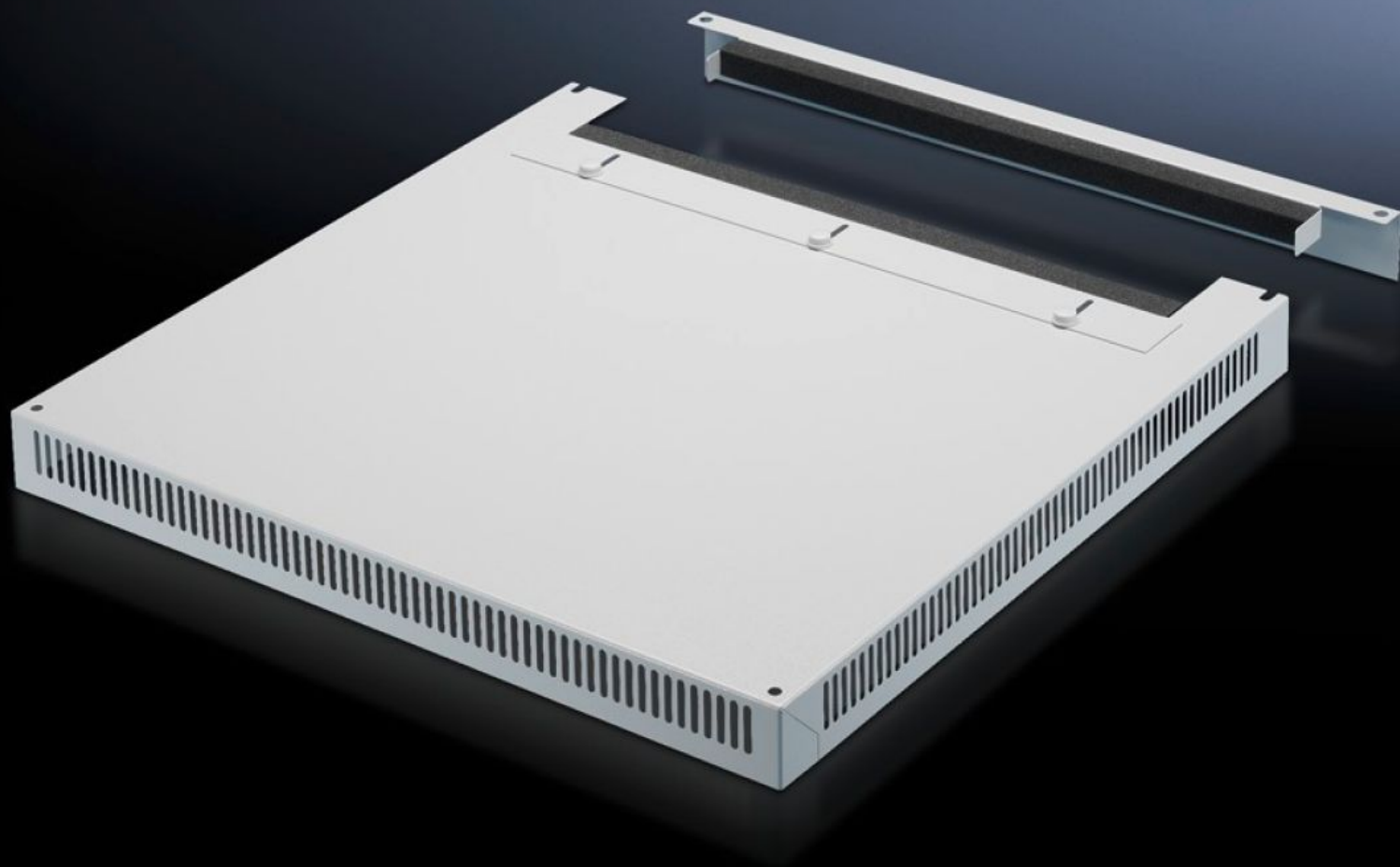


Rittal – The System.

Faster – better – everywhere.



DK 7826.809

Roof plate, vented

State: 31/05/2025 (Source: [rittal.com/nz-en](https://www.rittal.com/nz-en))

ENCLOSURES

POWER DISTRIBUTION

CLIMATE CONTROL

IT INFRASTRUCTURE

SOFTWARE & SERVICES

FRIEDHELM LOH GROUP



DK 7826.809 - Roof plate, vented for TS, TS IT

In exchange for the standard roof, with and without cable entry.

Features

Model No.	DK 7826.809
Design	Two-part with cable entry
Product description	In exchange for the standard roof. 72 mm high roof plate, all-round vent slots, clamp strip for cable entry. The two-piece design with cable entry allows convenient retrofitting.
Material	Sheet steel
Colour	RAL 7035
To fit	Enclosure type: TS TS IT Width: 800 mm Depth: 1,000 mm
Packs of	1 pc(s).
Net weight	10.7
Gross weight	14.5
Customs tariff number	73269098
EAN	4028177345447
ETIM 9	EC000744
ECLASS 8.0	27182405

Tender text

Vented cable entry roof plate
for TS, TS IT

Material: Sheet steel, spray finished in RAL 7035
Dimensions (W x H x D): 800 mm x 0 mm x 1000 mm