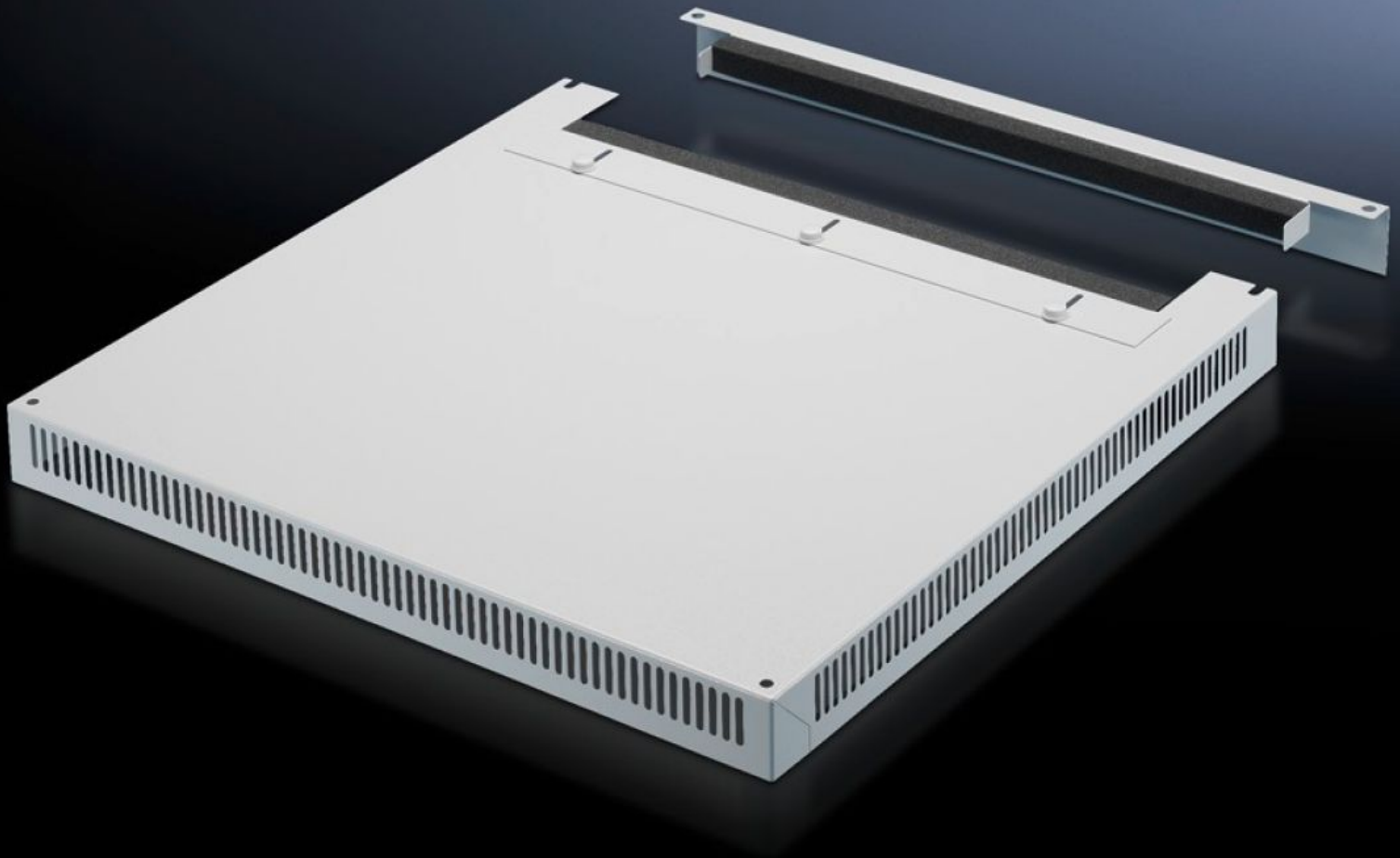


Rittal – The System.

Faster – better – everywhere.



DK 7826.869

Roof plate, vented

State: 5/06/2026 (Source: rittal.com/nz-en)

ENCLOSURES

POWER DISTRIBUTION

CLIMATE CONTROL

IT INFRASTRUCTURE

SOFTWARE & SERVICES

FRIEDHELM LOH GROUP



DK 7826.869 - Roof plate, vented for TS, TS IT

In exchange for the standard roof, with and without cable entry.

Features

Model No.	DK 7826.869
Design	Two-part with cable entry
Product description	In exchange for the standard roof. 72 mm high roof plate, all-round vent slots, clamp strip for cable entry. The two-piece design with cable entry allows convenient retrofitting.
Material	Sheet steel
Colour	RAL 7035
To fit	Enclosure type: TS TS IT Width: 800 mm Depth: 600 mm
Packs of	1 pc(s).
Net weight	8.909 kg
Gross weight	9.378 kg
Customs tariff number	94039910
ETIM 9	EC000744
ECLASS 8.0	27182405
Product description	DK-TS8 Roof plate, WxD: 800x600 mm, 2-part, For cable entry

Tender text

Vented roof plate, for TS, TS IT

W x D = 800 x 600 mm, two-piece

Material: Sheet steel, spray finished in RAL 7035

Dimensions (W x H x D): 800 mm x 0 mm x 600 mm