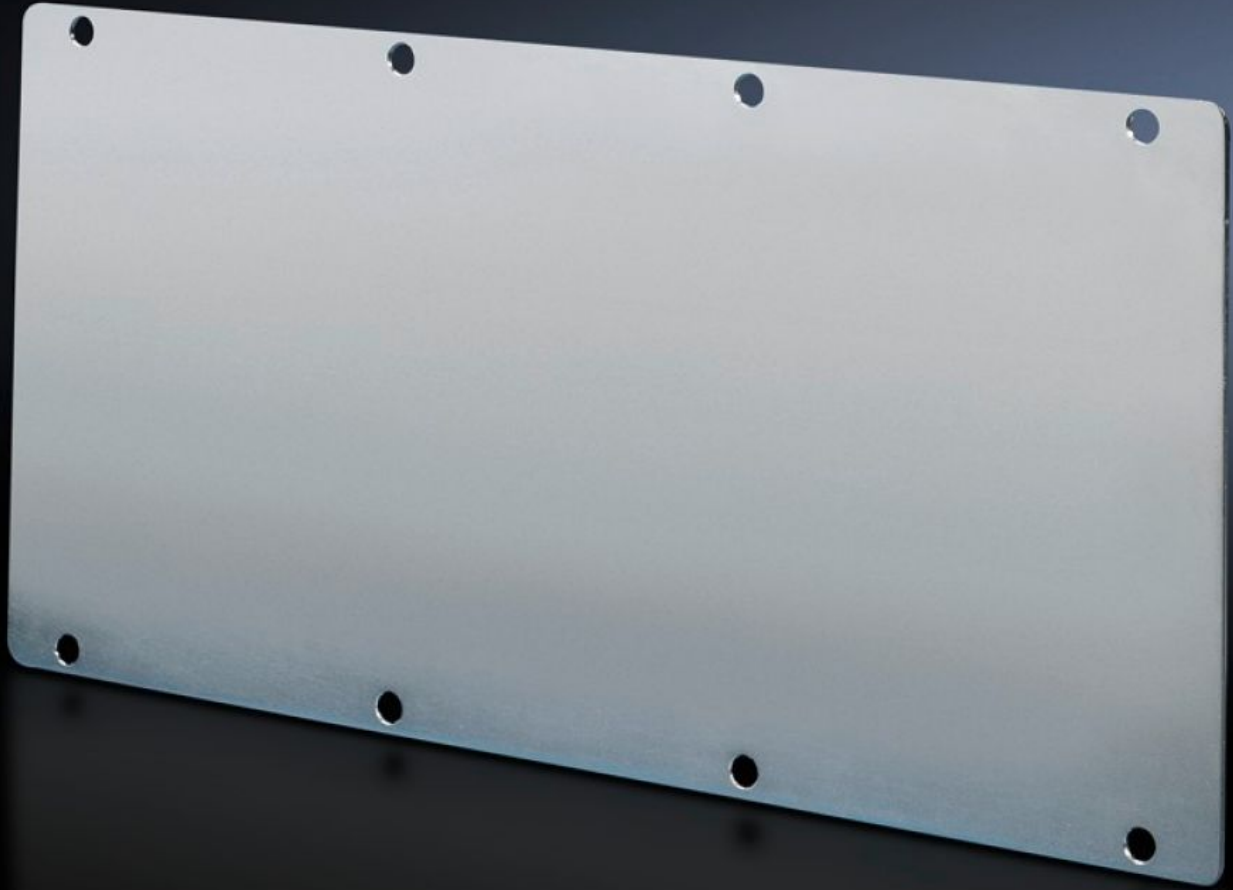


Rittal – The System.

Faster – better – everywhere.



TS 8609.160 Module plates

State: 10/04/2026 (Source: rittal.com/nz-en)

ENCLOSURES

POWER DISTRIBUTION

CLIMATE CONTROL

IT INFRASTRUCTURE

SOFTWARE & SERVICES

FRIEDHELM LOH GROUP



TS 8609.160 - Module plates solid

For sealing unused cut-outs. Easily machined for individual cut-outs.

Features

Model No.	TS 8609.160
Design	solid
Product description	For sealing unused cut-outs. Easily machined for individual cut-outs.
Material	Sheet steel, 2.0 mm
Surface finish	Zinc-plated
Supply includes	Seal included
To fit	Enclosure type: VX TS
Packs of	1 pc(s).
Net weight	0.88 kg
Gross weight	0.936 kg
PCF per pack (cradle-to-gate)	3.7 kg CO2 eq (Cat B)
Note on PCF category	Category B: PCF value (cradle-to-gate) based on the product weight, approximately calculated and self-declared
Customs tariff number	83024200
ETIM 9	EC000211
ECLASS 8.0	27142421
Product description	TS Module panel, closed