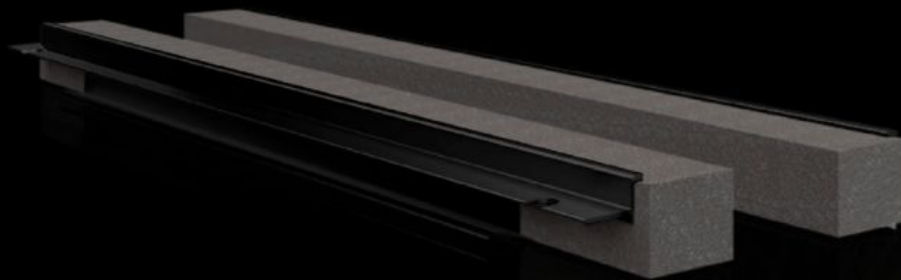


Rittal – The System.

Faster – better – everywhere.



VX 8618.812

Section for cable entry, rear

State: 18/04/2026 (Source: rittal.com/nz-en)

ENCLOSURES

POWER DISTRIBUTION

CLIMATE CONTROL

IT INFRASTRUCTURE

SOFTWARE & SERVICES

FRIEDHELM LOH GROUP



VX 8618.812 - Section for cable entry, rear

For top-mounting on the gland plate and enclosure frame.

Features

Model No.	VX 8618.812
Product description	For top-mounting on the gland plate and enclosure frame.
Benefits	Simple assembly Full-surface support High level of sealing of cables inserted into the enclosure
Applications	For top-mounting on the gland plate and enclosure frame
Material	Hard PVC Flame-resistant, self-extinguishing Temperature resistant to +60 °C Seal: PU foam Cross-section: 30 x 25 mm
Supply includes	Plug-in sections, incl. foam rubber clamp strip
Note	You will need two pieces per cable entry point. From an enclosure width of 1000 mm, the base assembly is divided into two sections in the width. Two cable entry points (left/right) may be used.
To fit	Enclosure type: VX: = 1,000 mm Enclosure type: VX SE Enclosure type: CX one-piece console
Packs of	4 pc(s).
Net weight	0.26 kg
Gross weight	0.28 kg
Customs tariff number	39269097
ETIM 9	EC002624
ECLASS 8.0	27189265
Product description	VX Section for cable entry, rear, for W: 1000 mm