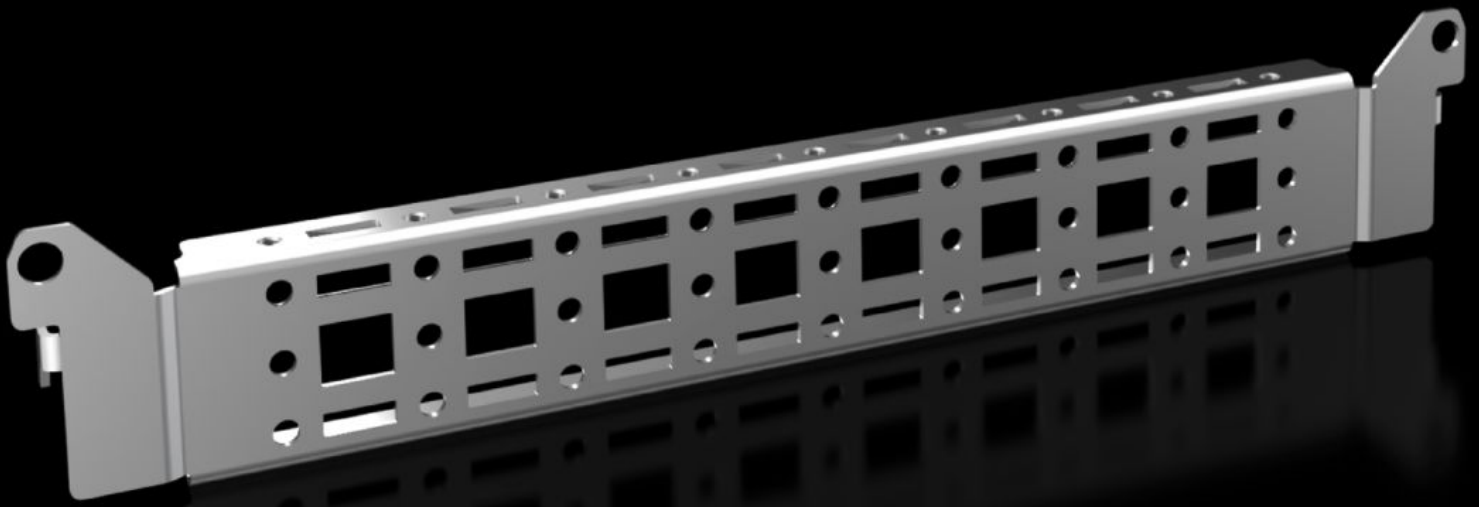


Rittal – The System.

Faster – better – everywhere.



VX 8619.700

**Punched section with mounting
flange, 14 x 39 mm**

State: 13/05/2026 (Source: rittal.com/nz-en)

ENCLOSURES

POWER DISTRIBUTION

CLIMATE CONTROL

IT INFRASTRUCTURE

SOFTWARE & SERVICES

FRIEDHELM LOH GROUP



VX 8619.700 - Punched section with mounting flange, 14 x 39 mm for VX, VX SE, PC, IW, AX

For securing cable ducts, cable conduit holders, equipment installed on the door, etc.



Features

| | |
|---|---|
| Model No. | VX 8619.700 |
| Product description | For attaching cable ducts, cable conduit holders, equipment installed on the door, etc. |
| Material | Sheet steel |
| Surface finish | Zinc-plated |
| Supply includes | Assembly parts |
| Distance between fixing points | 275 mm |
| To fit door width | 400 mm |
| VX installation options | In door width 400 mm |
| AX installation options | In enclosure width 300 mm and in enclosure height 400 mm, in conjunction with rail for interior installation AX |
| AX stainless steel installation options | In enclosure width 300 mm |
| Installation options, AX plastic | In door width 400 mm |
| Installation options for 3-part AX | In enclosure depth 473 mm |

Features

| | |
|-------------------------|---|
| CX installation options | In the pedestal, in the enclosure depth, 400 mm In one-piece console pedestal, in enclosure depth 400 mm |
| Assembly instruction | For installation in AX sheet steel, only in conjunction with rail for interior installation AX |
| Note | For installing your own components on the punched section with mounting flange, metal screws or self-tapping M5 screws are required |
| To fit | Enclosure type: VX AX AX plastic AX wall-mounted enclosure, 3-part CX one-piece console CX pedestal Suitable for width or height or depth: 400 mm |
| Packs of | 4 pc(s). |
| Net weight | 0.68 kg |
| Gross weight | 0.686 kg |
| Customs tariff number | 73269098 |
| ETIM 9 | EC002620 |
| ECLASS 8.0 | 27189234 |
| Product description | VX Punched section, with mounting flange 14 x 39 mm, for door width: 400 mm |

Approvals

| | |
|--------------|-----------------|
| Explanations | PCF-declaration |
|--------------|-----------------|