

**Rittal – The System.**

**Faster – better – everywhere.**



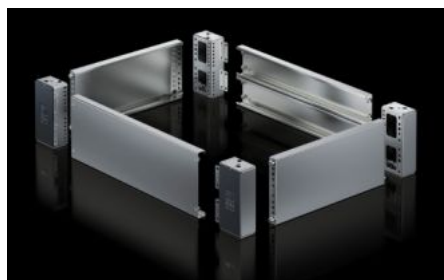
**VX 8660.052**

**Base/plinth corner pieces with  
base/plinth trim panels, front and  
rear for VX base/plinth system,  
stainless steel**



# VX 8660.052 - Base/plinth corner pieces with base/plinth trim panels, front and rear for VX base/plinth system, stainless steel New version

Base/plinth corner pieces with front and rear trim panel. Large openings in the base/plinth corner piece for optimum access to the screw connection. Seamlessly bayable.



## Features

|                 |  |
|-----------------|--|
| Model No.       | VX 8660.052  |
| Material        | Base/plinth corner piece: Stainless steel 1.4301 (AISI 304)<br>Base/plinth trim panel front/rear: Stainless steel 1.4301 (AISI 304)<br>Cover caps: ABS   |
| Surface finish  | Brushed, grain 400   |
| Supply includes | Assembly parts<br>4 base/plinth corner pieces<br>4 cover caps<br>2 base/plinth trim panels, front/rear, 100 mm high  |
| Note            | Side base/plinth trim panels are required to finish off a base/plinth unit and also for additional stability between the base/plinths.<br>If necessary, the cover caps included with the supply may be exchanged for stainless steel cover caps for VX base/plinth system, stainless steel.<br>Components from the 1st generation base/plinth system cannot be combined with components from the 2nd generation base/plinth system |
| Dimensions      | Height: 100 mm   |

# Features

|                       |  |
|-----------------------|--|
| To fit                | Enclosure type: VX<br>VX SE<br>TS<br>PC<br>Width: = 1,000 mm |
| Type rating to UL 50E | Type 1<br>Type 3R<br>Type 4<br>Type 4X<br>Type 12            |
| Packs of              | 2 pc(s).   |
| Net weight            | 5.4  |
| Gross weight          | 5.652  |
| Customs tariff number | 94039910   |
| EAN                   | 4028177037878  |
| ETIM 9                | EC000721   |
| ETIM 8                | EC000721   |
| ECLASS 8.0            | 27182003   |

# Approvals

|           |                  |
|-----------|------------------|
| Approvals | UL + C-UL - FTTA |
|-----------|------------------|