

Rittal – The System.

Faster – better – everywhere.



VX 8660.071

**Base/plinth trim panels, sides, for
VX base/plinth system, stainless
steel**

State: 28/08/2025 (Source: rittal.com/nz-en)

ENCLOSURES

POWER DISTRIBUTION

CLIMATE CONTROL

IT INFRASTRUCTURE

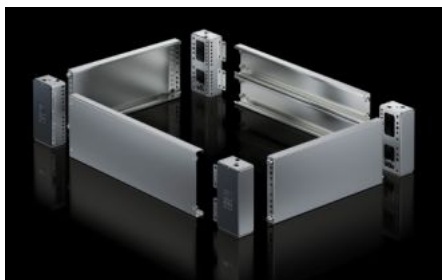
SOFTWARE & SERVICES

FRIEDHELM LOH GROUP



VX 8660.071 - Base/plinth trim panels, sides, for VX base/plinth system, stainless steel New version

Stainless steel base/plinth trim panels are used in the depth to finish off a base/plinth unit at the sides.



Features

Model No.	VX 8660.071
Material	Stainless steel 1.4301 (AISI 304)
Surface finish	Brushed, grain 400
Supply includes	Assembly parts
Note	Components from the 1st generation base/plinth system cannot be combined with components from the 2nd generation base/plinth system
Dimensions	Height: 100 mm
To fit	Enclosure type: VX VX SE TS PC Depth: = 500 mm
Type rating to UL 50E	Type 1 Type 3R Type 4 Type 4X Type 12
Packs of	2 pc(s).
Net weight	1.6

Features

Gross weight	1.722
Customs tariff number	94039910
EAN	4028177037816
ETIM 9	EC000721
ETIM 8	EC000721
ECLASS 8.0	27182003

Approvals

Approvals	UL + C-UL - FTTA
-----------	------------------