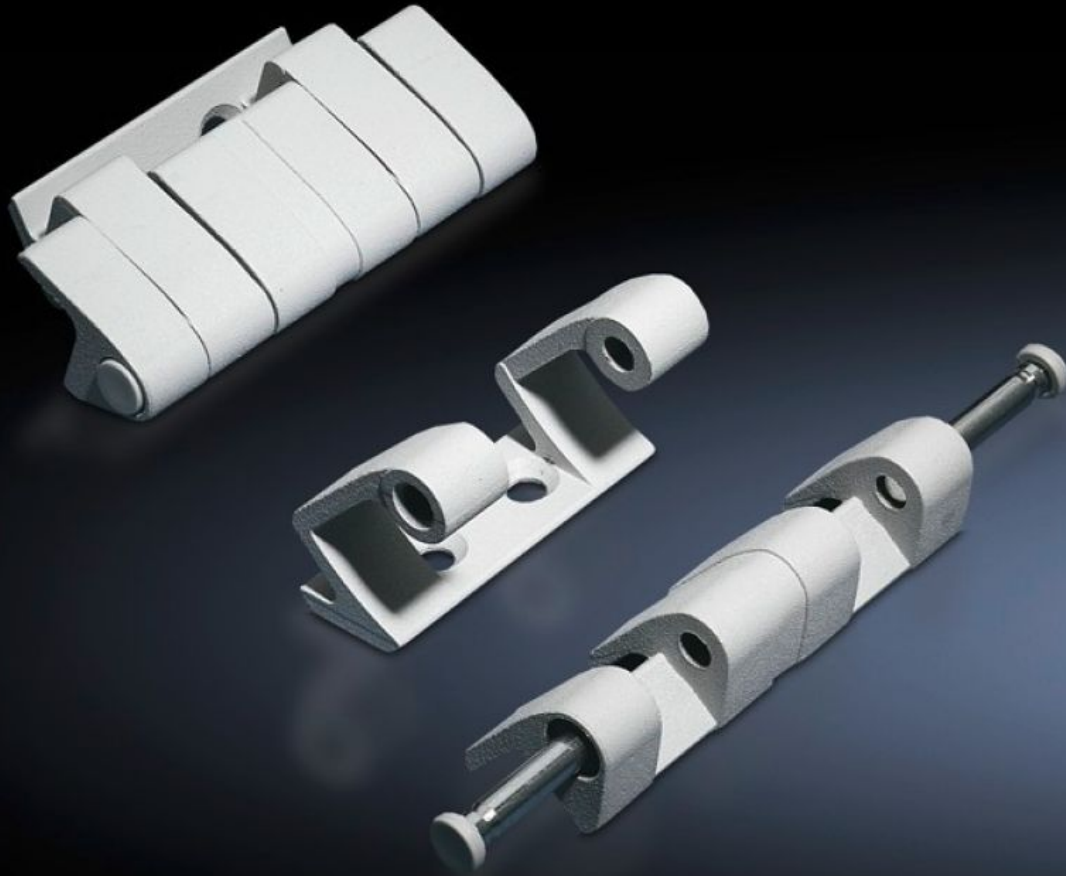


# Rittal – The System.

Faster – better – everywhere.



## SZ 8701.180 180° hinge

State: 22/05/2026 (Source: [rittal.com/nz-en](http://rittal.com/nz-en))

ENCLOSURES

POWER DISTRIBUTION

CLIMATE CONTROL

IT INFRASTRUCTURE

SOFTWARE & SERVICES

FRIEDHELM LOH GROUP



# SZ 8701.180 - 180° hinge

To extend the door opening angle to 180°

## Features

Model No.	SZ 8701.180
Material	Die-cast zinc
Colour	Matt nickel-plated
Supply includes	Assembly parts
Door opening angle	180°
Note	The protection category of the enclosure may be reduced. The doors must be hinged on the same side when enclosures are bayed.
Suitable for door variant	Sheet steel door Stainless steel door
To fit enclosure type	TS VX SE
Packs of	4 pc(s).
Net weight	0.92 kg
Gross weight	0.964 kg
Customs tariff number	83021000
ETIM 9	EC001167
ECLASS 8.0	27409219
Product description	TS 180° hinges, for TS, VX SE, door option: sheet steel or stainless steel, matt nickel-plated