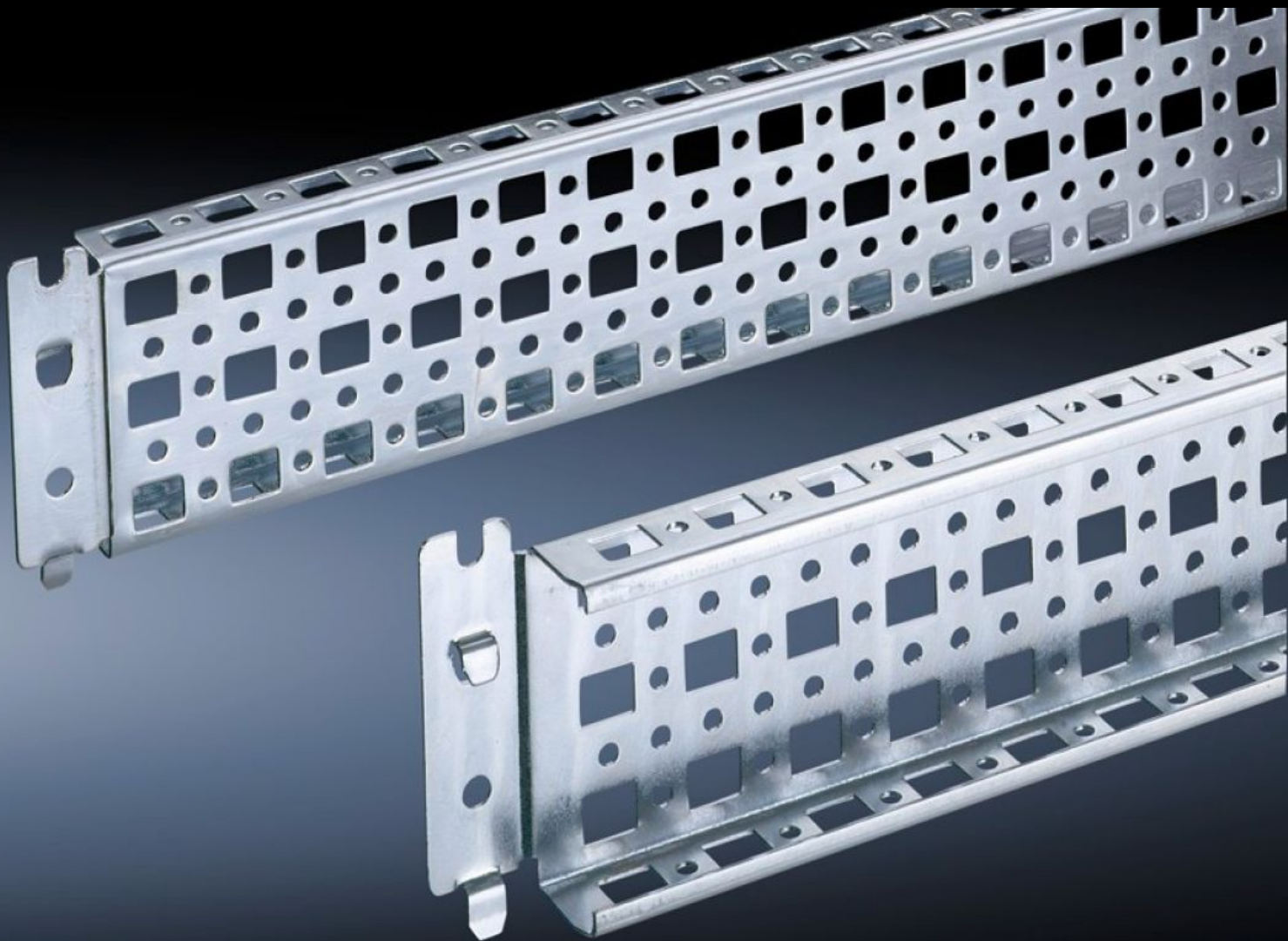


Rittal – The System.

Faster – better – everywhere.



SZ 8800.640

**PS punched section with mounting
flange 23 x 73 mm**

State: 23/05/2026 (Source: rittal.com/nz-en)

ENCLOSURES

POWER DISTRIBUTION

CLIMATE CONTROL

IT INFRASTRUCTURE

SOFTWARE & SERVICES

FRIEDHELM LOH GROUP



SZ 8800.640 - PS punched section with mounting flange 23 x 73 mm for TS, VX SE

For direct mounting on the horizontal enclosure sections of a TS. Only suitable for mounting to the vertical enclosure sections in conjunction with an adaptor. Simply locate into the TS punchings and secure.



Features

| | |
|----------------------|--------------------------------------------------------------------------------------------------------------------------------------------------------------------------------------------------------------------------------------------------|
| Model No. | SZ 8800.640 |
| Product description | Variable, with 5 rows of holes for universal skeleton structures or partial assembly. Simply locate into the system punchings and secure. |
| Material | Sheet steel |
| Surface finish | Zinc-plated |
| Supply includes | Assembly screws |
| Installation options | On the vertical TS, VX SE enclosure section via adaptor rails for VX compatibility On the horizontal TS enclosure section On the horizontal VX SE enclosure section, bottom On the horizontal VX SE enclosure section, top in the width |
| To fit | Enclosure type: TS VX SE Width/depth: 400 mm |
| Packs of | 4 pc(s). |
| Net weight | 1.4 kg |
| Gross weight | 1.661 kg |

Features

| | |
|-----------------------|-------------------------------------------------------------------------------------|
| Customs tariff number | 73269098 |
| ETIM 9 | EC002625 |
| ECLASS 8.0 | 27189234 |
| Product description | TS punched section with mounting flange, 23 x 73 mm, for TS, SE, for W/D: 400 mm |
