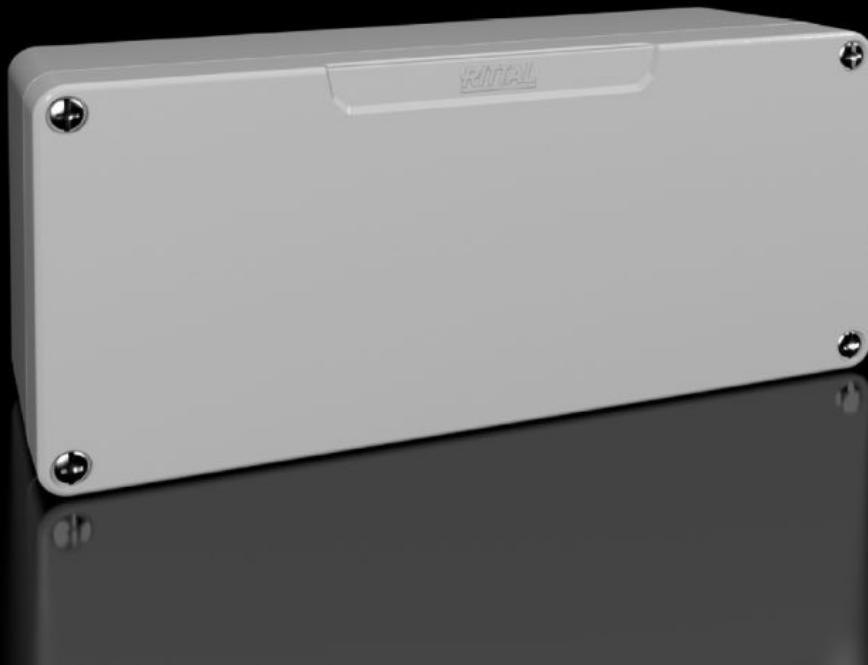


Rittal – The System.

Faster – better – everywhere.



GA 9106.210

Cast aluminium enclosures GA

State: 16/04/2026 (Source: rittal.com/nz-en)

ENCLOSURES

POWER DISTRIBUTION

CLIMATE CONTROL

IT INFRASTRUCTURE

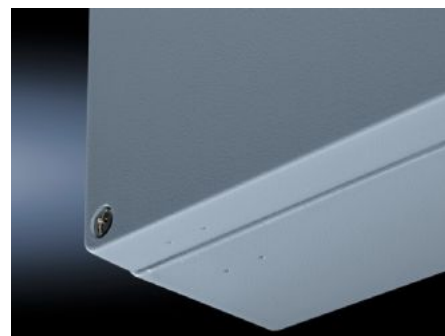
SOFTWARE & SERVICES

FRIEDHELM LOH GROUP



GA 9106.210 - Cast aluminium enclosures GA

Spray-finished cast aluminium enclosure. Protection category IP 66.



Features

| | |
|-----------------------------------|---|
| Model No. | GA 9106.210 |
| Material | Enclosure: Cast aluminium Cover: Cast aluminium, all-round CR cellular rubber cord seal |
| Surface finish | Textured paint |
| Colour | RAL 7001 |
| Supply includes | Enclosure with cover Cover screws, captive Screws for attaching support rails Screw for connection of the PE conductor |
| Protection category NEMA | NEMA 4 |
| Protection category to IEC 60 529 | IP 66 |
| IK Code | IK08 |
| Dimensions | Width: 175 mm Height: 80 mm Depth: 58 mm |
| Basic material | Cast aluminium |
| Packs of | 1 pc(s). |
| Net weight | 0.5 kg |

Features

| | |
|-----------------------|---|
| Gross weight | 0.584 kg |
| Customs tariff number | 84879090 |
| ETIM 9 | EC000261 |
| ECLASS 8.0 | 27180101 |
| Product description | GA Cast aluminium enclosure, WHD: 175x80x57 mm, Cast aluminum, without mounting plate, with cover |

Approvals

| | |
|--------------|---|
| Explanations | Declaration of conformity Declaration of conformity UK |
|--------------|---|