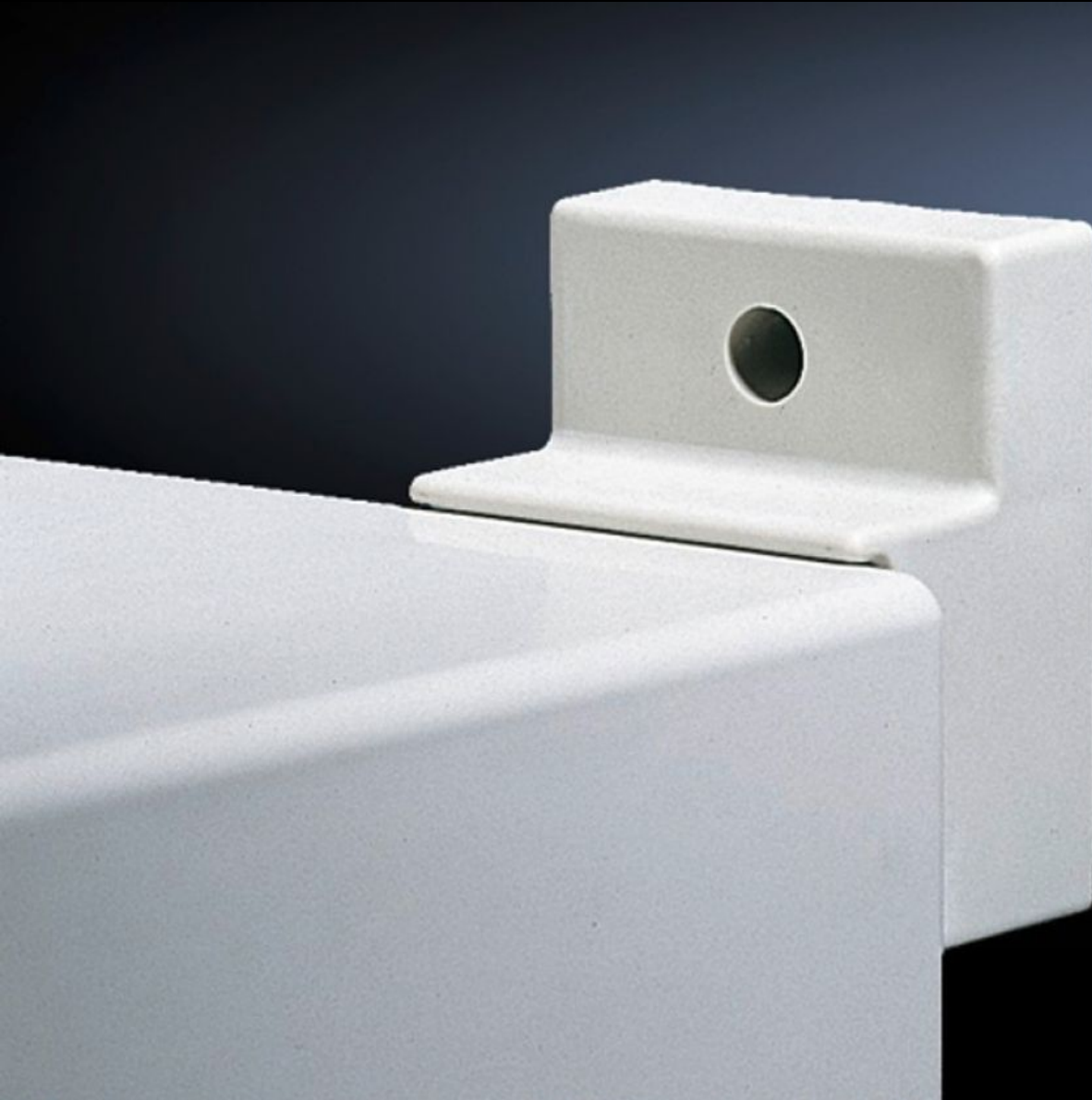


# Rittal – The System.

Faster – better – everywhere.



## KS 9266.000

# Wall mounting bracket

State: 14/05/2026 (Source: [rittal.com/nz-en](http://rittal.com/nz-en))

ENCLOSURES

POWER DISTRIBUTION

CLIMATE CONTROL

IT INFRASTRUCTURE

SOFTWARE & SERVICES

FRIEDHELM LOH GROUP



# KS 9266.000 - Wall mounting bracket for KS

For attaching to the enclosure from the outside. Distance from wall 30 mm.

## Features

Model No.	KS 9266.000
Product description	For attachment to the wall, only possible from the outside of the enclosure.
Material	Fibre-glass reinforced polycarbonate with graphite additive
Colour	Similar to RAL 9011
Supply includes	Assembly parts for mounting on the enclosure
Installation options	For attaching to the enclosure from the outside
Note on Model No.	for Ex applications
To fit	Enclosure type: KS
Packs of	4 pc(s).
Net weight	0.232 kg
Gross weight	0.235 kg
Customs tariff number	83024900
ETIM 9	EC002625
ECLASS 8.0	27189234
Product description	KS Wall mounting bracket for KS