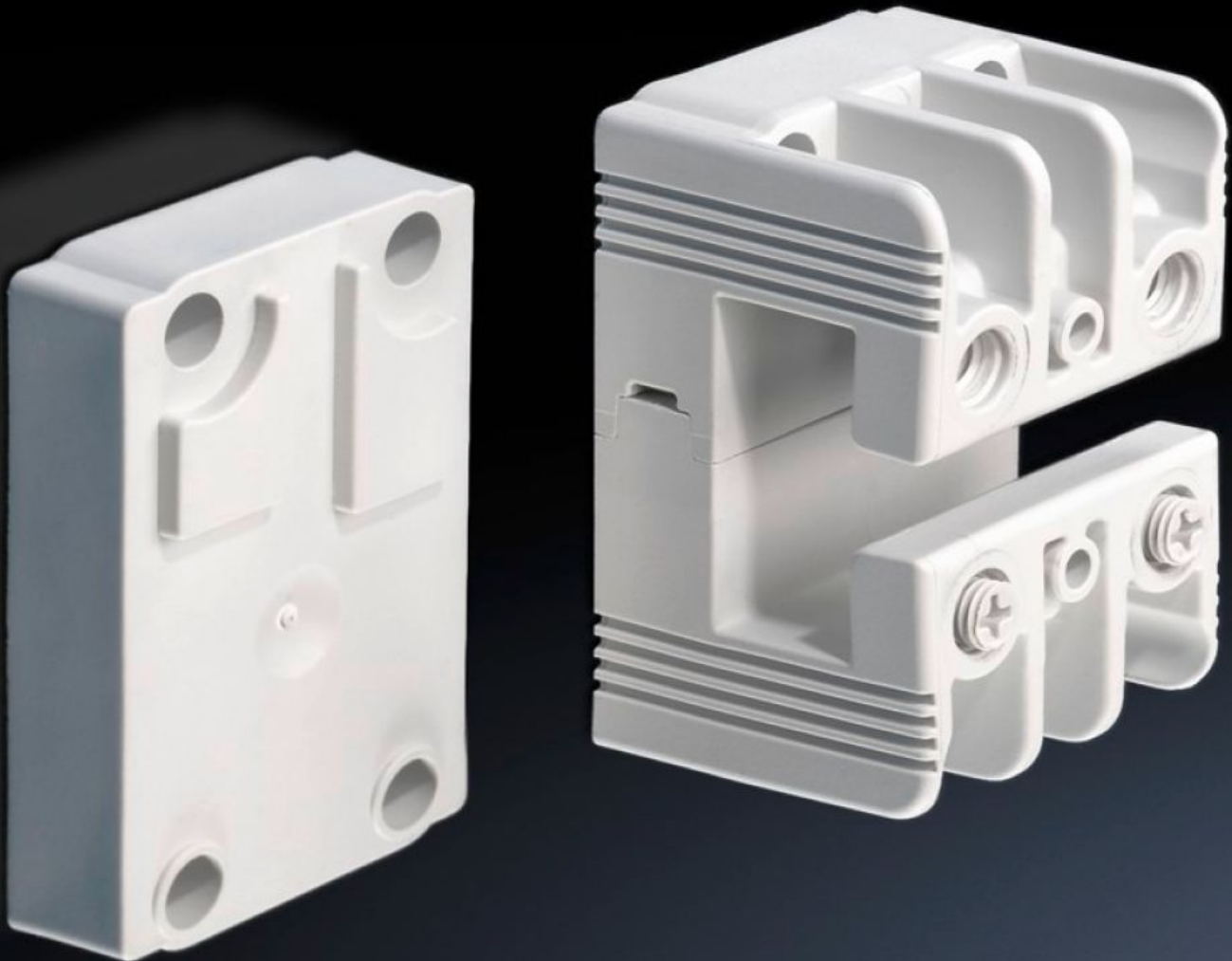


**Rittal – The System.**

Faster – better – everywhere.



# SV 9342.030

## Busbar support

State: 22/05/2026 (Source: [rittal.com/nz-en](http://rittal.com/nz-en))

ENCLOSURES

POWER DISTRIBUTION

CLIMATE CONTROL

IT INFRASTRUCTURE

SOFTWARE & SERVICES

FRIEDHELM LOH GROUP



# SV 9342.030 - Busbar support 1-pole



## Features

Model No.	SV 9342.030
Material	Polyamide Fire protection corresponding to UL 94-V0
Colour	RAL 7035
Supply includes	Including raised section for stepped configuration of the PLS busbars
To fit busbars	PLS 1600
Number of poles	Single-pole
Note	Multi-pole systems with 60 mm bar centre distance may be configured by buying the busbar supports Support suitable for AC and DC applications.
Rated operating voltage	1000 V AC 1500 V DC
PEN/N/PE support	Yes
Packs of	4 pc(s).
Net weight	0.28 kg
Gross weight	0.306 kg
Customs tariff number	85469010
ETIM 9	EC001166
ECLASS 8.0	27400607

# Features

---

Product description SV Busbar support, PLS 1600, 1-pole

# Approvals

---

Approvals ABS  
Lloyds Register  
UL + C-UL (listed)

---

Explanations Declaration of conformity

# Tender text

PLS 1600 busbar support 1-pole  
PLS 1600 busbar support with fastening attachment,  
1-pole  
Technical specifications  
Bar centre distance: 60 mm  
E-Cu busbar :PLS 1600  
Construction width: 40 mm  
Length: 60 mm  
Tightening torque  
Assembly screw: 3 - 5 Nm  
Lid attachment: 0.7 Nm  
System  
Rittal RiLine60