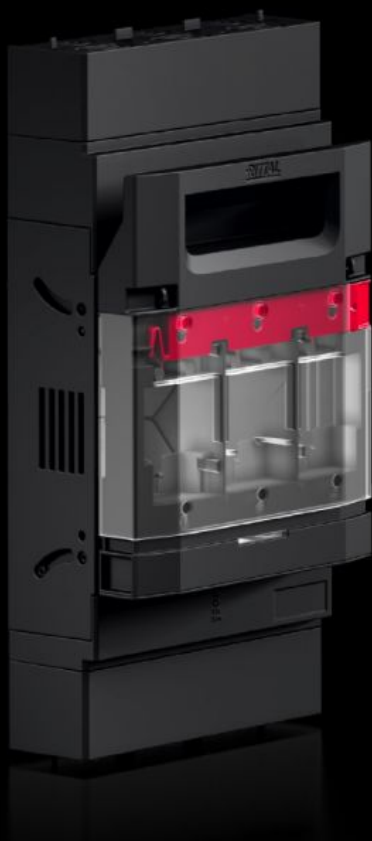


# Rittal – The System.

Faster – better – everywhere.



## RX 9362.115

## RiLineX Fuse-switch disconnecter

State: 20/07/2025 (Source: [rittal.com/nz-en](http://rittal.com/nz-en))

ENCLOSURES

POWER DISTRIBUTION

CLIMATE CONTROL

IT INFRASTRUCTURE

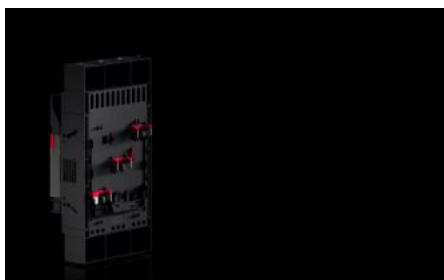
SOFTWARE & SERVICES

FRIEDHELM LOH GROUP



# RX 9362.115 - RiLineX Fuse-switch disconnecter

RiLineX NH fuse-switch disconnecter in size 1 for 60 mm busbar systems. The cover can be locked and prepared for a lead seal. It also has visual fuse monitoring. Integrated measuring points on the cover ensure safe voltage testing. NH fuse-switch disconnecters have a park position to make maintenance easier. Size M10 screw terminal connection. Cable outlet can be at the top or bottom, as required. Includes electronic fuse monitoring.



## Features

Model No.	RX 9362.115
Benefits	Cover: can be locked and prepared for a lead seal Voltage test through separate opening Snap-on mounting up to 250 A and simple adjustment to busbar thickness 5/10 mm Tool-free changeover of the cable outlet Park position for simpler maintenance work High rated voltage 800 V ready All variants also available with electronic fuse monitoring
Material	Polyamide (PA 6) Fire protection corresponding to UL 94 Contact tracks: Electrolytic copper, silver-plated
Colour	RAL 9005 RAL 35745
Supply includes	Connectors for electronic fuse monitoring
For bar systems with centre-to-centre spacing	60 mm
Cable outlet	Top/bottom
Type of electrical connection	Screw M10

# Features

Rated operating current max.	250 A
Rated operating voltage	690 V AC
For NH size	1
Test specification	IEC/DIN EN 60 947-3 DIN EN 60 269-2 (fuse inserts)
Dimensions	Width: 182 mm Height: 349 mm Depth: 117 mm
Operating temperature range	-5 °C...35 °C
Storage temperature range	-25 °C...70 °C
To fit busbars	15 x 5/10 20 x 5/10 30 x 5/10
To fit busbar system	RiLineX RiLine60
Number of poles	3-pole
Utilisation category	AC-23B (400 V/100 A) AC-22B (500 V/100 A) DC-22B (250 V/100 A) DC-21B (440 V/100 A)
Contamination level	3
with electronic fuse monitoring	Yes
IP protection category to IEC 60 529	IP 2XB
Power dissipation (max.)	51 W
Packs of	1 pc(s).
Net weight	2.7
Gross weight	2.728
Copper weight (kg per piece)	0.8
Customs tariff number	85369095

# Features

---

ETIM 9	EC001040
--------	----------

# Approvals

---

Explanations	Declaration of conformity
--------------	---------------------------