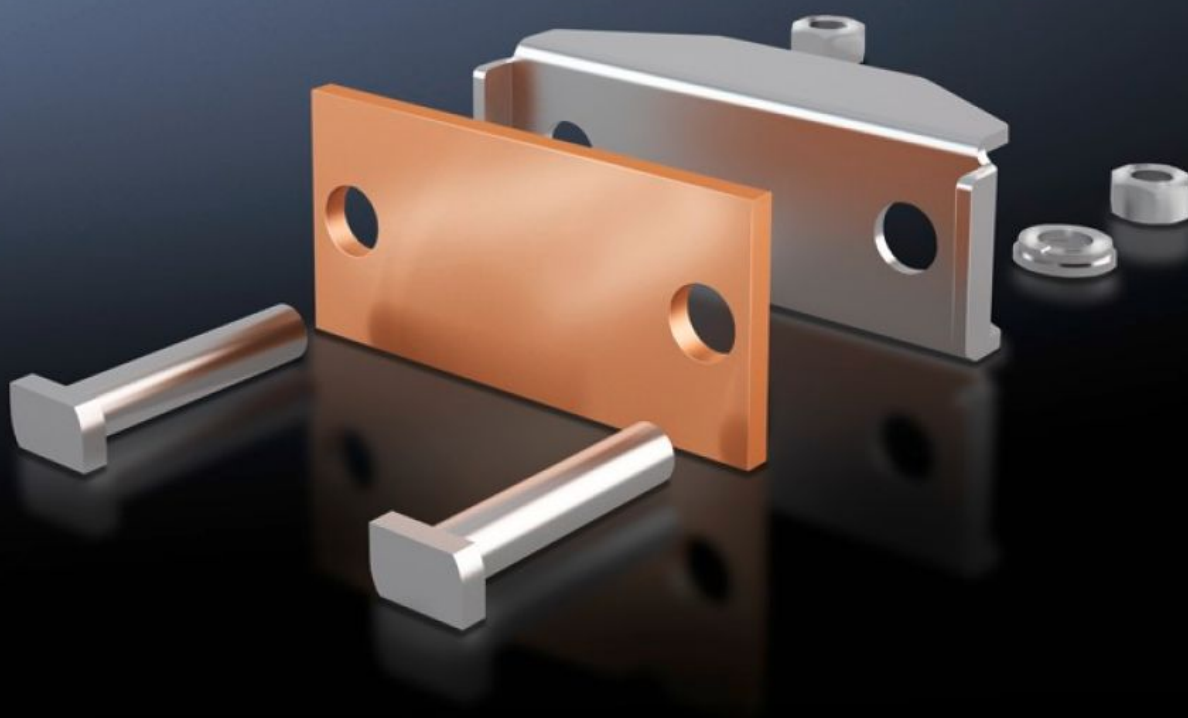


Rittal – The System.

Faster – better – everywhere.



SV 9640.330 Connection plate

State: 17/07/2025 (Source: rittal.com/nz-en)

ENCLOSURES

POWER DISTRIBUTION

CLIMATE CONTROL

IT INFRASTRUCTURE

SOFTWARE & SERVICES

FRIEDHELM LOH GROUP



SV 9640.330 - Connection plate for laminated copper bars

For the connection of laminated flat copper bars.

Features

Model No.	SV 9640.330
Product description	For the connection of laminated flat copper bars.
Material	Connection plate: E-Cu Thrust piece: Stainless steel
Supply includes	Assembly parts
To fit busbars	Maxi-PLS 45 S/45
Clamping area for laminated copper bars (W x H)	32 x 20 mm
Packs of	3 pc(s).
Net weight	0.9
Gross weight	1.073
Copper weight (kg per piece)	0.13
Customs tariff number	73269098
EAN	4028177238671
ETIM 9	EC002498
ECLASS 8.0	27379201

Approvals

Approvals	UL + C-UL (listed)
Explanations	Declaration of conformity Declaration of conformity UK