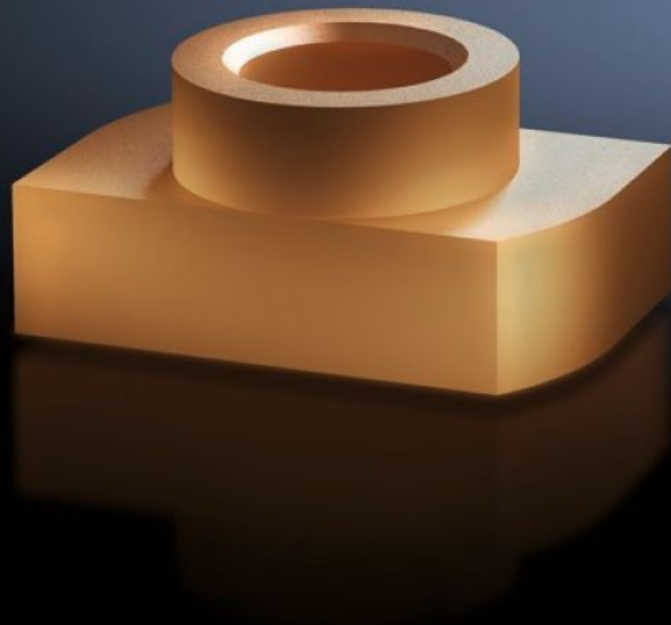


Rittal – The System.

Faster – better – everywhere.



SV 9650.905

Sliding nut

State: 20/09/2025 (Source: rittal.com/nz-en)

ENCLOSURES

POWER DISTRIBUTION

CLIMATE CONTROL

IT INFRASTRUCTURE

SOFTWARE & SERVICES

FRIEDHELM LOH GROUP



SV 9650.905 - Sliding nut for Maxi-PLS busbars

May be retro-fitted by sliding into the Maxi-PLS busbar section.

Features

Model No.	SV 9650.905
Product description	For attaching flat copper bars and connection components to Maxi-PLS busbars. For sliding into the busbar section retrospectively and tightening the threaded bolts.
Material	E-Cu
To fit busbars	Maxi-PLS 60
Dimensions	Thread: M8
Packs of	3 pc(s).
Net weight	0.069
Gross weight	0.075
Copper weight (kg per piece)	0.07
Customs tariff number	74198090
EAN	4028177662810
ETIM 9	EC000096
ECLASS 8.0	23110804