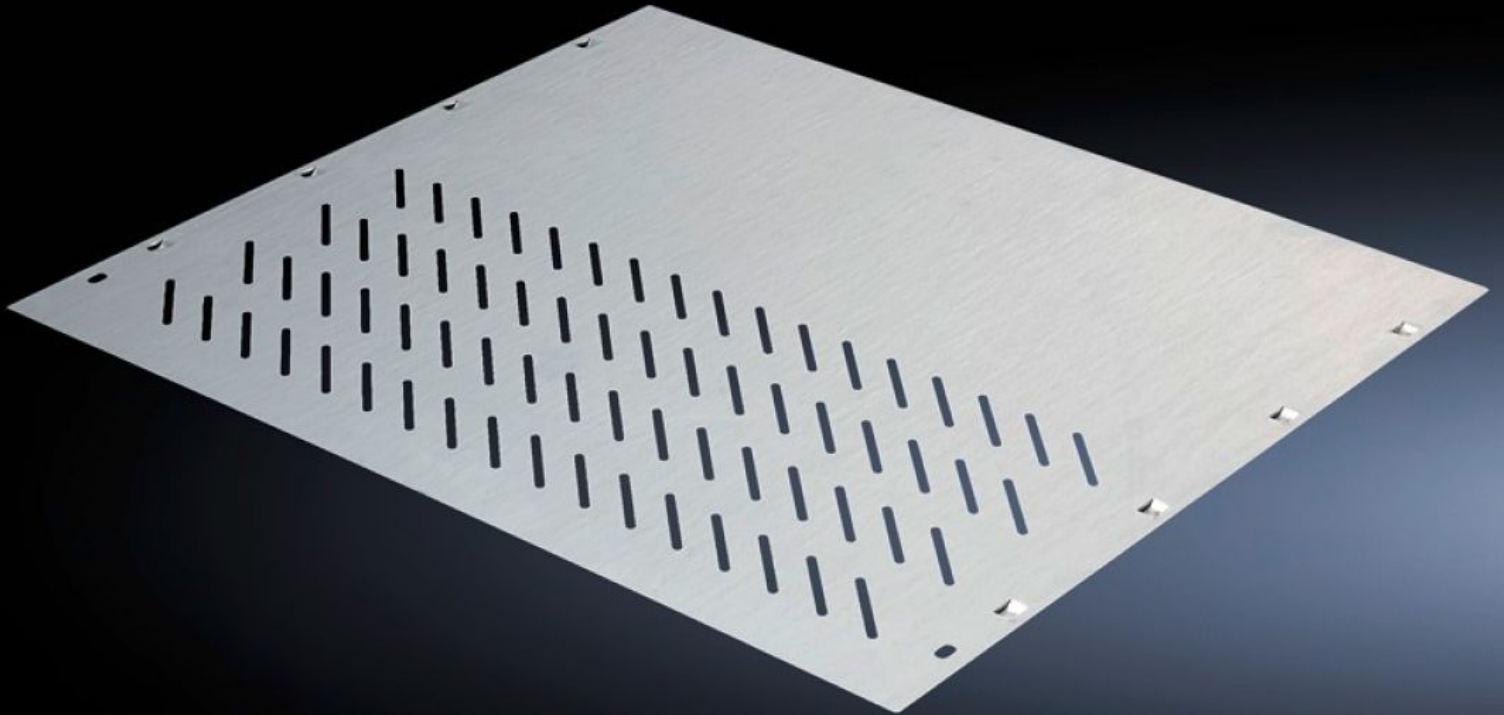


Rittal – The System.

Faster – better – everywhere.



SV 9673.464

Compartment divider

State: 24/06/2026 (Source: rittal.com/nz-en)

ENCLOSURES

POWER DISTRIBUTION

CLIMATE CONTROL

IT INFRASTRUCTURE

SOFTWARE & SERVICES

FRIEDHELM LOH GROUP



SV 9673.464 - Compartment divider

For the horizontal separation of compartments.



Features

| | |
|-----------------------|---|
| Model No. | SV 9673.464 |
| Design | With louvres |
| Product description | For the horizontal separation of compartments. In combination with the side panel modules, this creates Form separation in accordance with Form 3 or 4. |
| Material | Sheet steel, 1.25 mm |
| Surface finish | Zinc-plated |
| For compartment depth | 425 mm |
| Assembly instruction | 2 mounting brackets are required to install each compartment divider. |
| Dimensions | Width: 506 mm Depth: 445 mm |
| To fit | Width: = 600 mm |
| Packs of | 4 pc(s). |
| Net weight | 7.944 kg |
| Gross weight | 8.362 kg |
| Customs tariff number | 73269098 |
| ETIM 9 | EC002525 |
| ECLASS 8.0 | 27400613 |

Features

Product description

SV Compartment divider, WT: 506x445 mm, for TS (W: 600 mm)