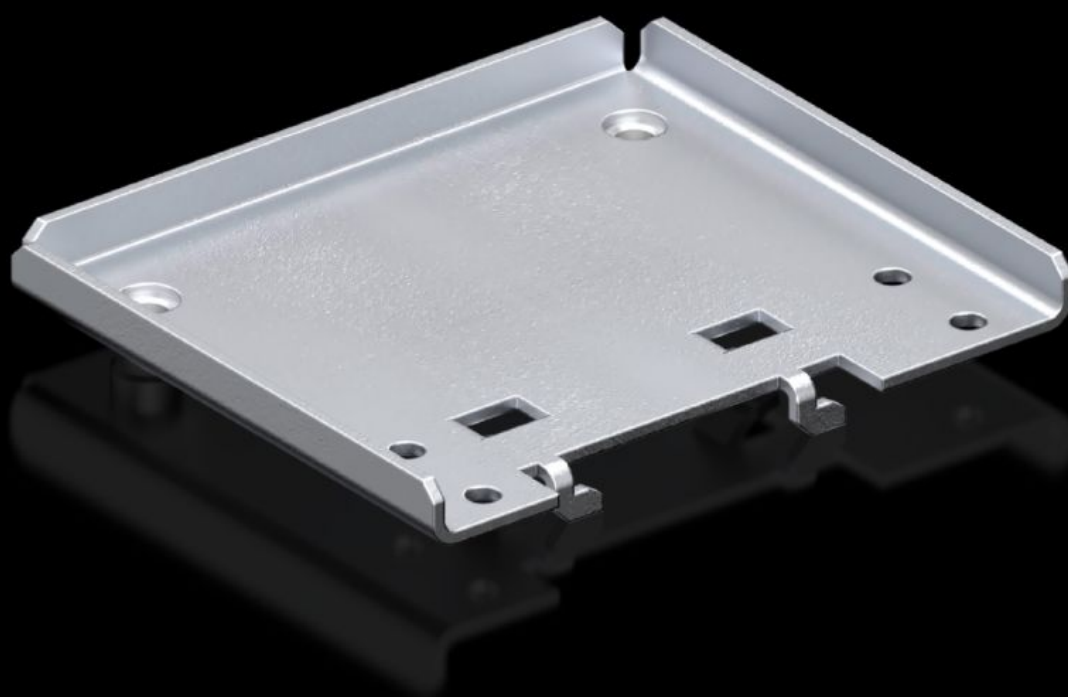


# Rittal – The System.

Faster – better – everywhere.



## SV 9674.102 System attachment

State: 30/05/2026 (Source: [rittal.com/nz-en](http://rittal.com/nz-en))

ENCLOSURES

POWER DISTRIBUTION

CLIMATE CONTROL

IT INFRASTRUCTURE

SOFTWARE & SERVICES

FRIEDHELM LOH GROUP



# SV 9674.102 - System attachment for Flat-PLS

For installing busbar supports.

## Features

Model No.	SV 9674.102
Applications	For installing busbar supports
Material	Stainless steel
Number of poles	Single-pole
To fit busbar system	Flat-PLS 60
To fit	Enclosure type: TS 8
Packs of	2 pc(s).
Net weight	0.7 kg
Gross weight	0.72 kg
Customs tariff number	83024900
ETIM 9	EC002525
ECLASS 8.0	27400613
Product description	SV System attachment, for busbar support, SV 9674002/020 (Flat-PLS 60)