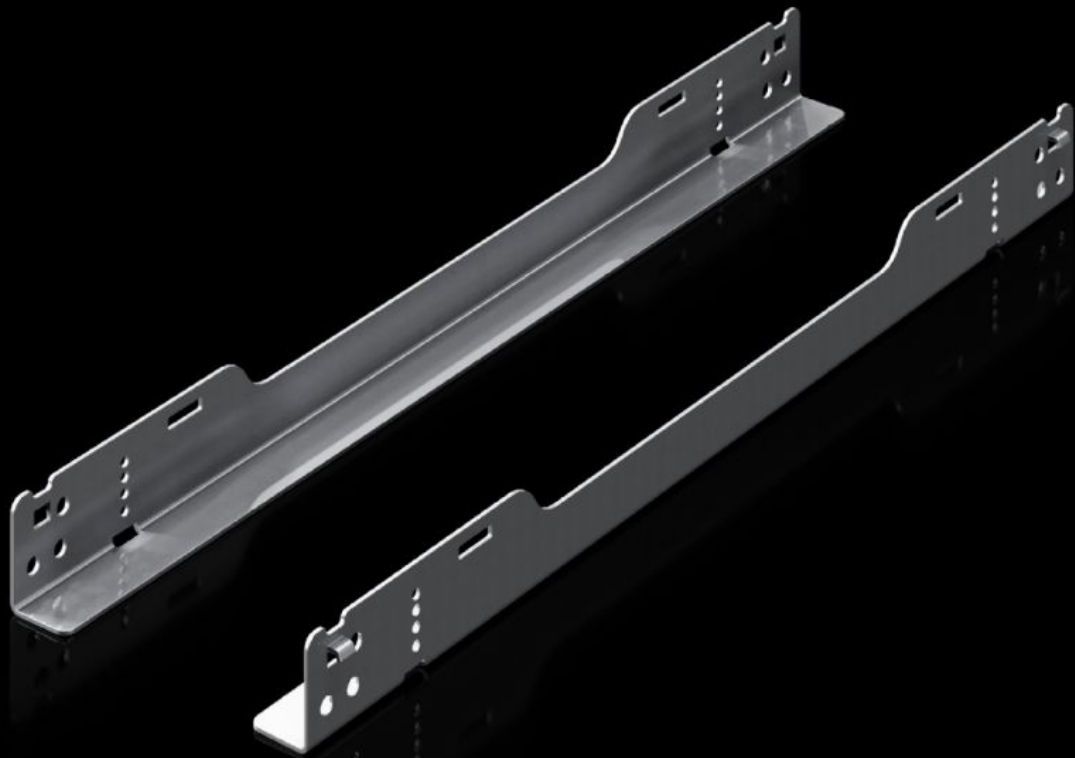


Rittal – The System.

Faster – better – everywhere.



SV 9692.050 Slide rail

State: 4/05/2026 (Source: rittal.com/nz-en)

ENCLOSURES

POWER DISTRIBUTION

CLIMATE CONTROL

IT INFRASTRUCTURE

SOFTWARE & SERVICES

FRIEDHELM LOH GROUP



SV 9692.050 - Slide rail VX ESS

To accommodate rack-mounted batteries.

Features

Model No.	SV 9692.050
Material	Sheet steel, 2 mm, zinc-plated
Supply includes	Perforated strip Assembly parts
Length	313.9 mm
Load capacity (static)	120 kg 1,200 N
To fit	Enclosure type: VX CS Toptec Depth: 600 mm
Packs of	10 pc(s).
Net weight	3.6 kg
Gross weight	3.7 kg
PCF per pack (cradle-to-gate)	9.09 kg CO2 eq (Cat B)
Note on PCF category	Category B: PCF value (cradle-to-gate) based on the product weight, approximately calculated and self-declared
Customs tariff number	73269098
ETIM 9	EC002620
Product description	VX ESS slide rail L: 313.9 mm, for enclosure D: 600 mm