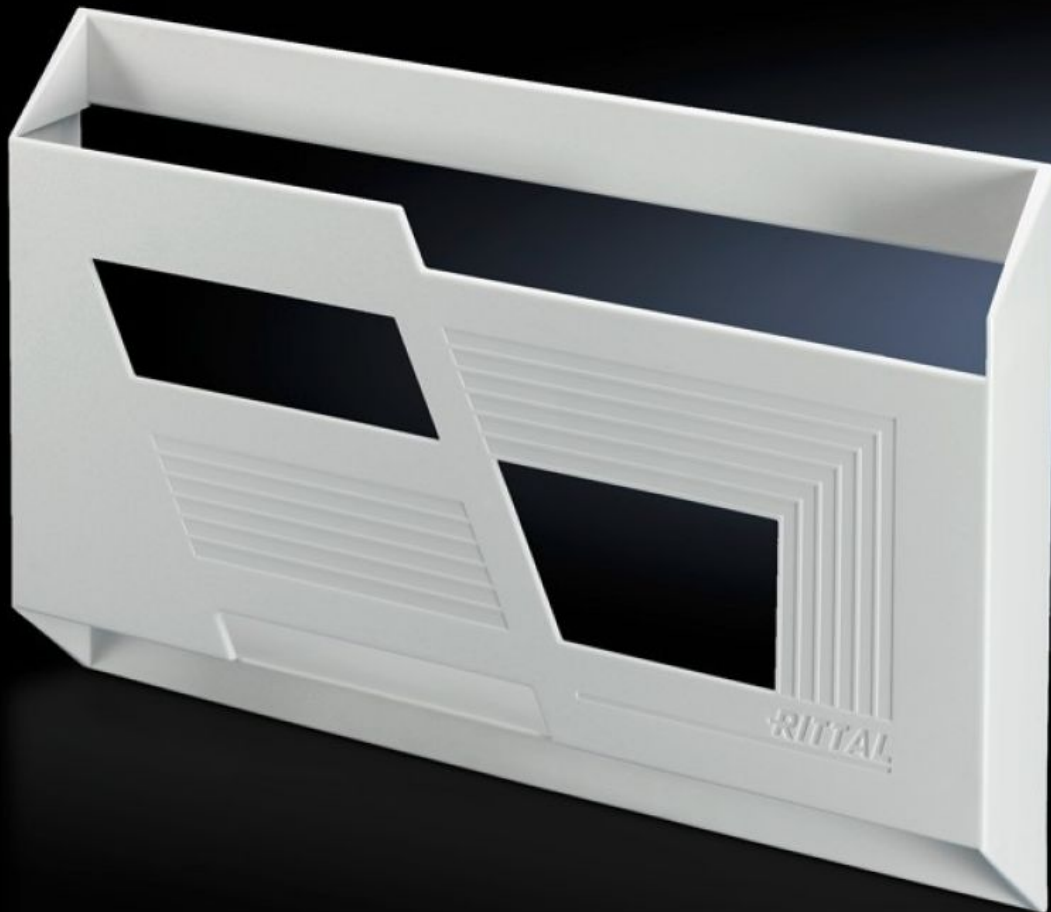


Rittal – The System.

Faster – better – everywhere.



SZ 2514.000

Portaesquema plástico

Estado: 10/05/2026 (Fuente: rittal.com/pe-es)

ENCLOSURES

POWER DISTRIBUTION

CLIMATE CONTROL

IT INFRASTRUCTURE

SOFTWARE & SERVICES

FRIEDHELM LOH GROUP



SZ 2514.000 - Portaesquema plástico

Para pegar en la superficie interior de la puerta.

Características

| | |
|--------------------------------|--|
| Referencia | SZ 2514.000 |
| Descripción producto | Para pegar sobre superficies. |
| Material | Poliestireno con guías autoadhesivas Libre de halógenos |
| Color | Semejante RAL 7035 |
| Altura interior | 254 mm |
| Anchura interior | 228 mm |
| Prof. interior | 17 mm |
| Observación | In line with our commitment to sustainability, our wiring plan lecterns are manufactured using recycled plastic. This may result in small dark spots on the surface – a typical characteristic of recycled materials. These do not affect the quality or functionality of the product and emphasize our dedication to environmentally friendly solutions. |
| Adecuado para formato de papel | DIN A4 vert. |
| Unidad de embalaje | 1 pza(s). |
| Peso neto | 0.136 kg |
| Peso bruto | 0.14 kg |
| Código arancelario | 39269097 |
| ETIM 9 | EC000317 |
| ETIM 8 | EC000317 |
| ECLASS 8.0 | 27189267 |
| Descripción producto | SZ PORTAESQUEMAS DIN A4 |