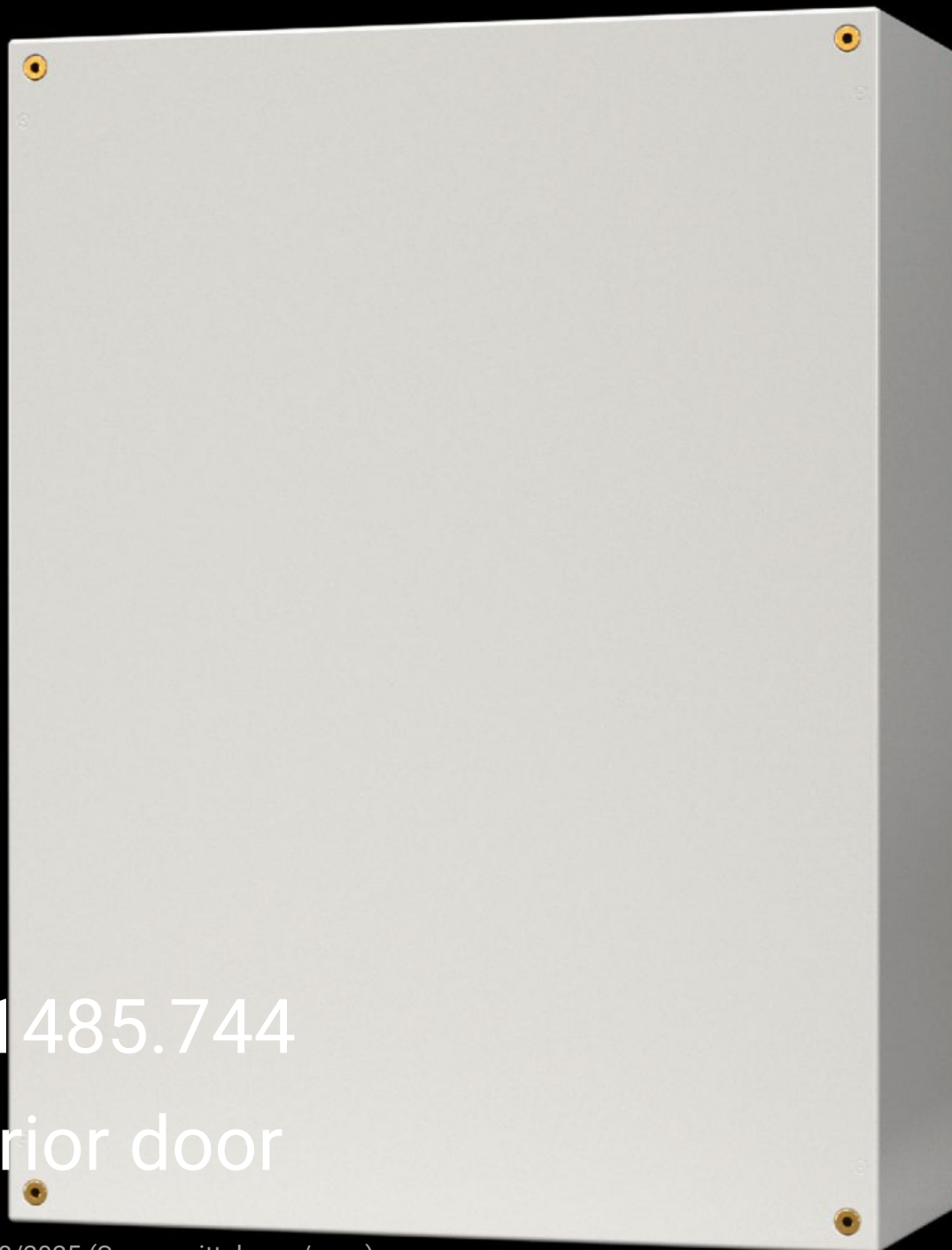
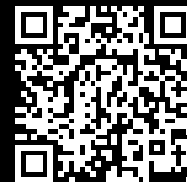


# Rittal – The System.

Faster – better – everywhere.



SZ 1485.744  
Interior door

State: 31/08/2025 (Source: [rittal.com/ro-ro](http://rittal.com/ro-ro))

ENCLOSURES

POWER DISTRIBUTION

CLIMATE CONTROL

IT INFRASTRUCTURE

SOFTWARE & SERVICES

FRIEDHELM LOH GROUP



# SZ 1485.744 - Interior door for AX plastic enclosures

For reliable access protection. Separation of the operating and equipment levels.



## Features

|                           |   |
|---------------------------|---|
| Model No.                 | SZ 1485.744   |
| Material                  | Door and door frame: Sheet steel  |
| Surface finish            | Door: Powder-coated, textured paint<br>Door frame: Zinc-plated                  |
| Colour                    | Door: RAL 7035  |
| Supply includes           | Door<br>Cam lock with 3 mm double-bit insert<br>Assembly screws                 |
| Installation options      | In AX plastic, on mounting bosses in the side panels                            |
| Note                      | Standard double-bit lock insert may be exchanged for 27 mm lock inserts, type A |
| To fit enclosure type     | AX plastic  |
| Suitable for width        | 400 mm  |
| Suitable for height       | 400 mm  |
| Material thickness - door | 1 mm  |
| Door opening angle        | 105°  |
| Packs of                  | 1 pc(s).  |

# Features

|                       |               |
|-----------------------|---------------|
| Net weight            | 1.94          |
| Gross weight          | 2.04          |
| Customs tariff number | 94039910      |
| EAN                   | 4028177965874 |
| ETIM 9                | EC000747      |
| ETIM 8                | EC000747      |
| ECLASS 8.0            | 27182204      |