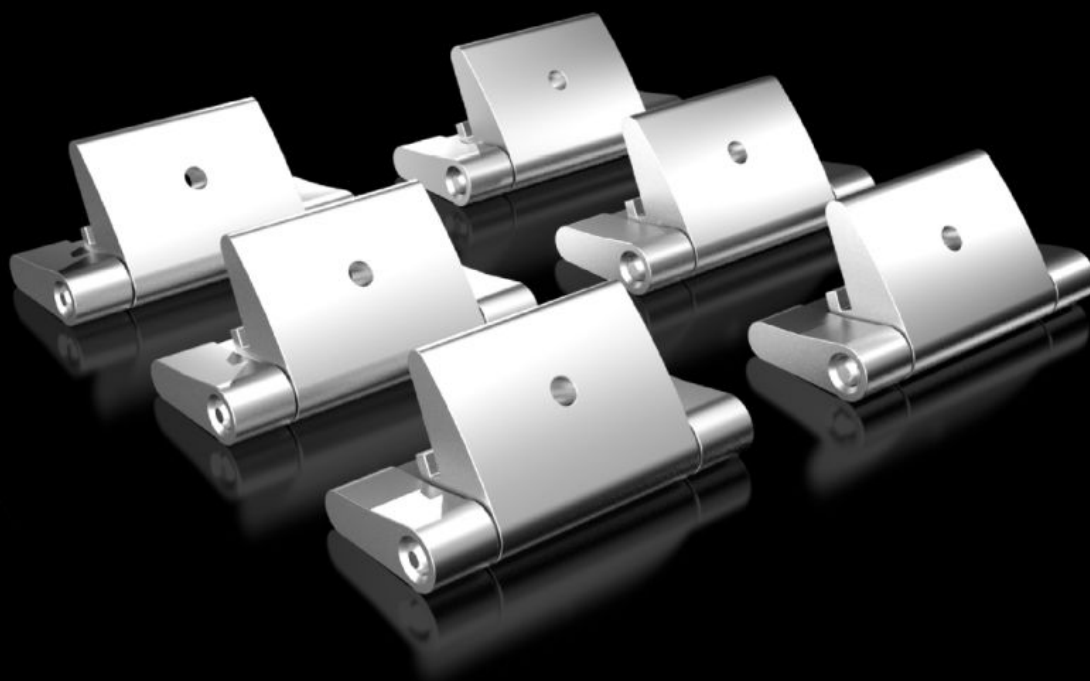


# Rittal – The System.

Faster – better – everywhere.



## KX 1592.220 Cover hinge

State: 14/07/2025 (Source: [rittal.com/ro-ro](https://www.rittal.com/ro-ro))

ENCLOSURES

POWER DISTRIBUTION

CLIMATE CONTROL

IT INFRASTRUCTURE

SOFTWARE & SERVICES

FRIEDHELM LOH GROUP



# KX 1592.220 - Cover hinge for terminal box KX

The cover hinge may be screw-fastened all the way round the enclosure protection channel and to the edge fold. The position of the installation holes is prepunched, so no need to measure and mark out. To extend the door opening angle to 180°.

## Features

|                       |  |
|-----------------------|--|
| Model No.             | KX 1592.220  |
| Product description   | The cover hinge may be screw-fastened all the way round the enclosure protection channel and to the edge fold. The position of the installation holes is prepunched, so no need to measure and mark out. |
| Material              | Die-cast zinc  |
| Supply includes       | Cover hinge<br>Stoppers<br>Assembly parts  |
| Note                  | For a door opening angle of up to 180°   |
| Packs of              | 6 pc(s).   |
| Net weight            | 0.168  |
| Gross weight          | 0.18   |
| Customs tariff number | 83021000   |
| EAN                   | 4028177973169  |
| ETIM 9                | EC001167   |
| ETIM 8                | EC001167   |
| ECLASS 8.0            | 27409219   |

## Approvals

|           |                  |
|-----------|------------------|
| Approvals | UL + C-UL - FTTA |
|-----------|------------------|