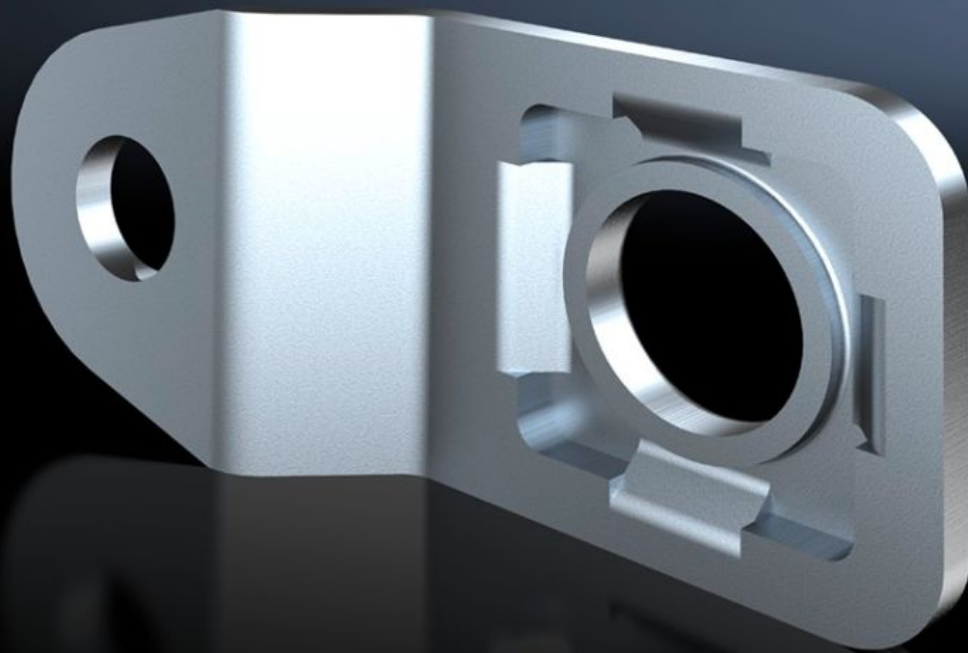


**Rittal – The System.**

Faster – better – everywhere.



**AX 1594.010**

**Wall mounting bracket**

State: 30/06/2026 (Source: [rittal.com/ro-ro](http://rittal.com/ro-ro))

ENCLOSURES

POWER DISTRIBUTION

CLIMATE CONTROL

IT INFRASTRUCTURE

SOFTWARE & SERVICES

FRIEDHELM LOH GROUP



# AX 1594.010 - Wall mounting bracket for AX stainless steel, KX stainless steel, stainless steel switch housing

For wall-mounting AX and KX stainless steel enclosures.



## Features

Model No.	AX 1594.010
Product description	For the attachment of AX and KX stainless steel enclosures.
Material	Stainless steel 1.4301 (AISI 304)
Supply includes	Assembly parts
Wall distance	10 mm
Note	For hygiene reasons, and to retain the protection category, the stainless steel enclosures do not have any drilled holes for wall mounting.
To fit	Enclosure type: AX stainless steel KX stainless steel
Packs of	4 pc(s).
Net weight	0,12 kg
Gross weight	0,152 kg
Customs tariff number	83025000
ETIM 9	EC002625
ETIM 8	EC002625
ECLASS 8.0	27189234

# Features

---

Product description

SZ Wall mounting bracket, for AX and KX, stainless steel, wall distance: 10 mm

# Approvals

---

Approvals

UL + C-UL - FTTA