

Rittal – The System.

Faster – better – everywhere.



DK 2094.400 Slot-in cable gland, 482.6 mm (19")

State: 05/09/2025 (Source: rittal.com/ro-ro)

ENCLOSURES

POWER DISTRIBUTION

CLIMATE CONTROL

IT INFRASTRUCTURE

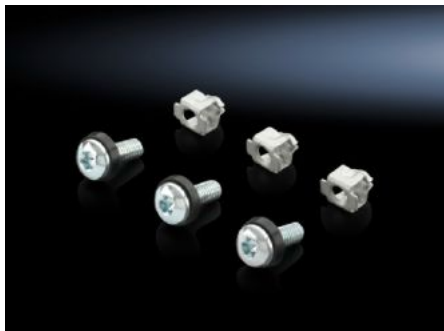
SOFTWARE & SERVICES

FRIEDHELM LOH GROUP



DK 2094.400 - Slot-in cable gland, 482.6 mm (19")

Consists of an expanding nut which is inserted into the square attachment hole at the front and then secured with the assembly screw.



Features

Model No.	DK 2094.400
Design	Size of mounting hole 9.5 x 9.5 mm
Product description	The cage nut consists of an expanding nut which is simply inserted into the square attachment hole at the front and then secured with the assembly screw. When tightening the screw, the cage expands and thus secures the required components. Clamping range from 1.2 – 4.5 mm. Multi-tooth screw head, bit size T 30.
Material	Sheet steel
Surface finish	Zinc-plated
Supply includes	Pan-head screws Expanding nuts Plastic washers
Dimensions	Thread: M6 Thread length: 16 mm
Packs of	50 pc(s).

Features

Net weight	0.3
Gross weight	0.38
PCF per pack (cradle-to-gate)	1.3 kg CO2 eq (Cat B)
Note on PCF category	Category B: PCF value (cradle-to-gate) based on the product weight, approximately calculated and self-declared
Customs tariff number	73181900
EAN	4028177488847
E-Number Sweden	E7239814
ETIM 9	EC002358
ETIM 8	EC002358
ECLASS 8.0	23110815