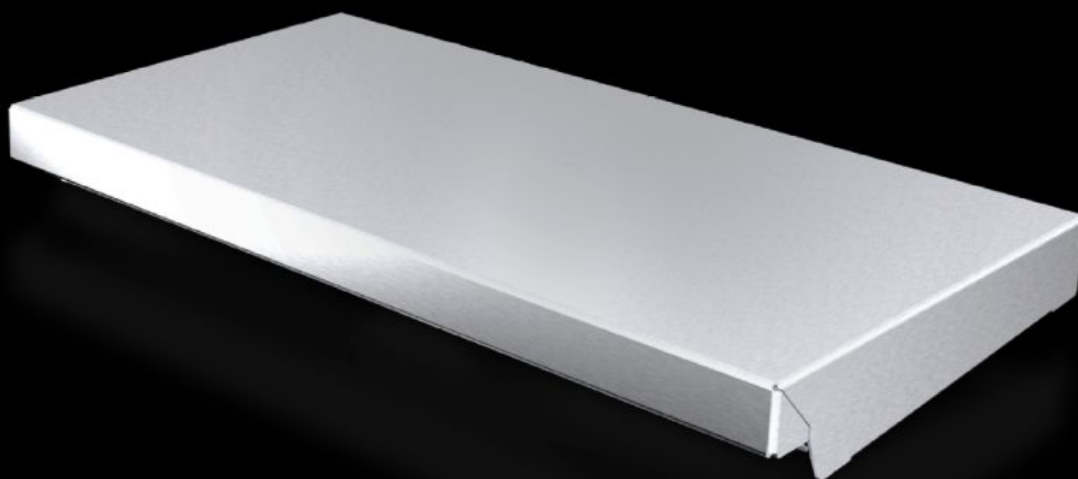
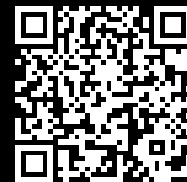


Rittal – The System.

Faster – better – everywhere.



AX 2472.010

Protective roof

State: 08/08/2025 (Source: [rittal.com/ro-ro](https://www.rittal.com/ro-ro))

ENCLOSURES

POWER DISTRIBUTION

CLIMATE CONTROL

IT INFRASTRUCTURE

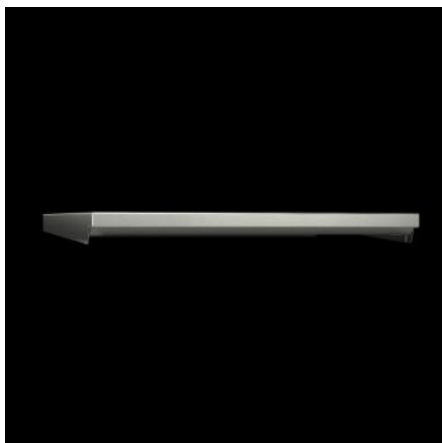
SOFTWARE & SERVICES

FRIEDHELM LOH GROUP



AX 2472.010 - Protective roof for AX

The sloping protective roof reliably protects the enclosure from standing moisture and other soiling from above.



Features

| | |
|-----------------------|--|
| Model No. | AX 2472.010 |
| Product description | The sloping protective roof reliably protects the enclosure from standing moisture and other soiling from above. |
| Material | Stainless steel 1.4301 (AISI 304) |
| Surface finish | Brushed, grain 240 |
| Supply includes | Assembly parts |
| Installation options | May also be screw-fastened for dynamic loads |
| Dimensions | Height: 37 mm |
| Type rating to UL 50E | Type 1 Type 3R Type 4 Type 4X Type 12 |
| To fit | Enclosure type: AX Width: = 380 mm Depth: = 210 mm |
| Packs of | 1 pc(s). |
| Net weight | 1.36 |

Features

| | |
|-----------------------|---------------|
| Gross weight | 1.66 |
| Customs tariff number | 94039910 |
| EAN | 4028177938229 |
| E-Number Sweden | E3465263 |
| ETIM 9 | EC000744 |
| ETIM 8 | EC000744 |
| ECLASS 8.0 | 27182405 |

Approvals

| | |
|-----------|------------------|
| Approvals | UL + C-UL - FTTA |
|-----------|------------------|