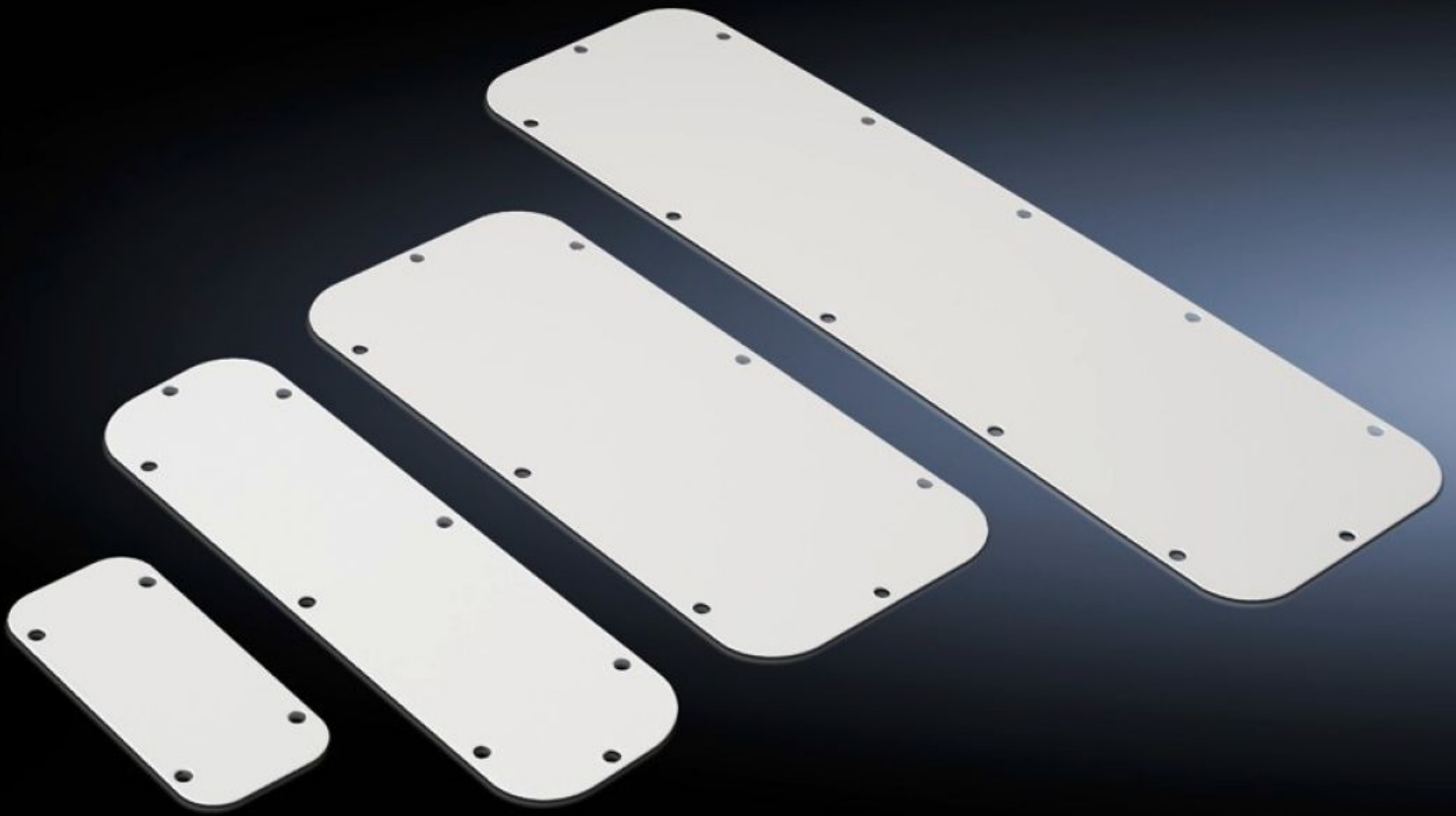


Rittal – The System.

Faster – better – everywhere.



SZ 2560.400 Metal gland plate

State: 15/04/2026 (Source: rittal.com/ro-ro)

ENCLOSURES

POWER DISTRIBUTION

CLIMATE CONTROL

IT INFRASTRUCTURE

SOFTWARE & SERVICES

FRIEDHELM LOH GROUP



SZ 2560.400 - Metal gland plate

As spare/replacement part for the standard gland plates supplied loose, IP 66 when mounting in the usual position at the bottom.

Features

| | |
|-----------------------------------|---|
| Model No. | SZ 2560.400 |
| Design | solid |
| Product description | As spare/replacement part for the standard gland plates supplied loose. |
| Material | Sheet steel |
| Colour | RAL 7035 |
| Note | The allocation of gland plate sizes is indicated on the relevant enclosures |
| Dimensions | Width: 160 mm Depth: 70 mm |
| To fit | Enclosure type: AE |
| Gland plate | Size: 1 |
| Protection category to IEC 60 529 | IP 66 when mounting in the usual position at the bottom |
| Packs of | 1 pc(s). |
| Net weight | 0,119 kg |
| Gross weight | 0,128 kg |
| Customs tariff number | 73079100 |
| ETIM 9 | EC000211 |
| ETIM 8 | EC000211 |
| ECLASS 8.0 | 27142421 |
| Product description | SZ Metal gland plate, closed, WD: 160x70 mm, size: 1 |