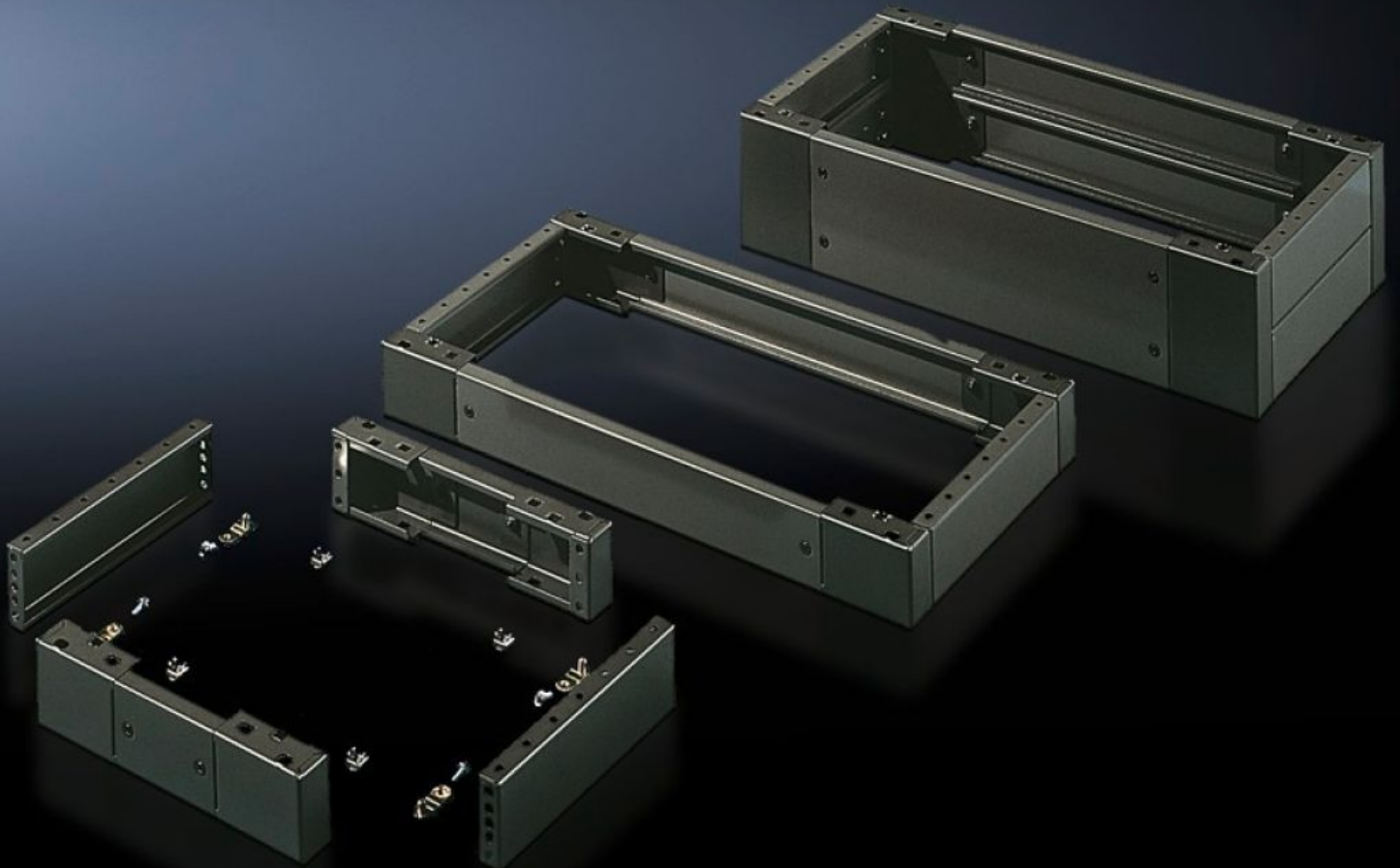


# Rittal – The System.

Faster – better – everywhere.



## SO 2826.200 Base/plinth, complete

State: 06/04/2026 (Source: [rittal.com/ro-ro](http://rittal.com/ro-ro))

ENCLOSURES

POWER DISTRIBUTION

CLIMATE CONTROL

IT INFRASTRUCTURE

SOFTWARE & SERVICES

FRIEDHELM LOH GROUP



# SO 2826.200 - Base/plinth, complete Sheet steel, for AE, universal consoles TP

Trim panels at the front and rear with fitted corner pieces and side trim panels.

## Features

Model No.	SO 2826.200
Product description	Trim panels at the front and rear with fitted corner pieces and side trim panels.
Material	Sheet steel
Surface finish	Spray-finished
Colour	RAL 7022
Supply includes	4 corner pieces 2 trim panels front/rear 2 trim panels, side Assembly parts for mounting on the enclosure 1 trim panel front/rear x 200 mm 2 trim panels, front/rear, x 100 mm 4 trim panels, side, x 100 mm
Dimensions	Height: 200 mm Depth: 279 mm
To fit	Enclosure type: AE Width: = 600 mm Depth: = 300 mm
Packs of	1 pc(s).
Net weight	8,811 kg
Gross weight	9,275 kg
Customs tariff number	94039910
ETIM 9	EC000721
ETIM 8	EC000721
ECLASS 8.0	27182003

# Features

---

Product description

AE Base/plinth, complete, for AE, for WD: 600x300 mm, H: 200 mm,  
Sheet steel