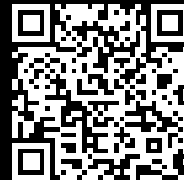


Rittal – The System.

Faster – better – everywhere.



SK 3239.300 Blue e+ outlet filter

State: 24/08/2025 (Source: [rittal.com/ro-ro](https://www.rittal.com/ro-ro))

ENCLOSURES

POWER DISTRIBUTION

CLIMATE CONTROL

IT INFRASTRUCTURE

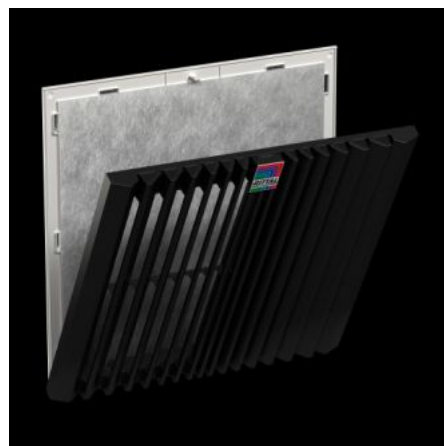
SOFTWARE & SERVICES

FRIEDHELM LOH GROUP



SK 3239.300 - Blue e+ outlet filter

The outlet filter is used in conjunction with the corresponding fan-and-filter unit to dissipate heat loss from enclosures, ventilate the enclosure and protect temperature-sensitive components. This is achieved through the direct infeed of ambient air, the temperature of which must be lower than the permissible internal temperature of the enclosure.



Features

| | |
|------------------|--|
| Model No. | SK 3239.300 |
| Design | wall-mounted |
| Benefits | Easy filter changes, thanks to a new opening mechanism on the louvred grille Faster installation on the enclosure with optimised detent hooks Tool-free assembly |
| Material | Plastic |
| Colour | RAL 7035 |
| Supply includes | Outlet filter Pleated filter |
| Mounting cut-out | Cut-out width: 177 mm Cut-out height: 177 mm |
| To fit Model No. | SK 3239.7xx |
| Dimensions | Width: 204 mm Height: 204 mm Depth: 45.8 mm |

Features

| | |
|-------------------------------------|--|
| Protection category NEMA | Type 12 with chopped-fibre filter/pleated filter Type 3, 3R, 4, 4X with chopped-fibre filter/pleated filter and hose-proof hood |
| IP protection category to IEC 60529 | IP 54 with chopped-fibre filter/pleated filter IP 55 with pleated filter and absorber mat IP 56 with chopped-fibre filter/pleated filter and hose-proof hood |
| Packs of | 1 pc(s). |
| Net weight | 0.37 |
| Gross weight | 0.473 |
| Customs tariff number | 39269097 |
| EAN | 4028177998391 |
| ETIM 9 | EC002513 |
| ETIM 8 | EC002513 |
| ECLASS 8.0 | 27180706 |

Approvals

| | |
|-----------|--|
| Approvals | UL + C-UL - FTTA UR + C-UR (recognized) |
|-----------|--|