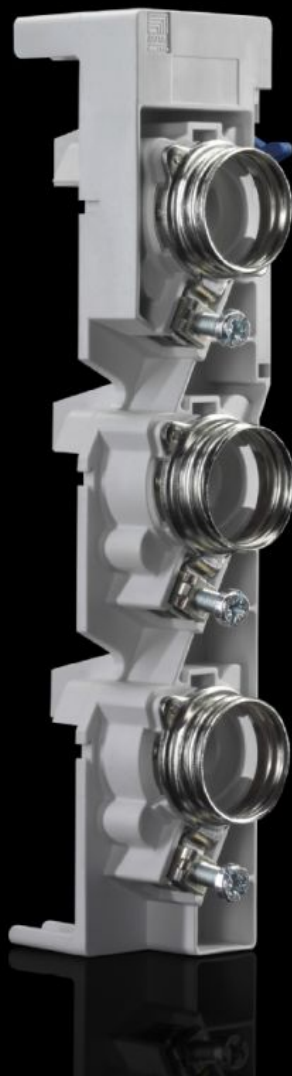


Rittal – The System.

Faster – better – everywhere.



SV 3427.010

Bus-mounting fuse base

State: 21/12/2025 (Source: [rittal.com/ro-ro](https://www.rittal.com/ro-ro))

ENCLOSURES

POWER DISTRIBUTION

CLIMATE CONTROL

IT INFRASTRUCTURE

SOFTWARE & SERVICES

FRIEDHELM LOH GROUP



SV 3427.010 - Bus-mounting fuse base

3-pole, for 60 mm bar centre distance.

Features

Model No.	SV 3427.010
Material	Bus-mounting fuse base: Fibreglass-reinforced, thermoplastic polyester (PBT) Contact hazard protection: Polyamide Fire protection corresponding to UL 94-V0
Colour	RAL 7035
Note	Wire end ferrules should be used with fine wire conductors
For bar systems with centre-to-centre spacing	60 mm
Type of electrical connection	Box terminal
Fuse inserts	D II-E 27 (adaptor screw)
Rated insulation voltage	690 V
Rated current max.	25 A
Rated operating voltage	500 V (DC) 500 V, 3~
Note	For the use of fuse inserts to EN 60 269-3 (DIN VDE 0636-3)
Dimensions	Width: 42 mm Height: 209 mm
Connection of round conductors	1.5 - 16 mm ²
To fit busbars	Height: 5, 10 mm
Number of poles	3-pole
Rated operating voltage (L1 + L2)	500 V (DC)
Rated operating voltage (L1 + L3)	500 V (DC)
Round conductor cross-section	1.5 - 16 mm ²

Features

Packs of	10 pc(s).
Net weight	2.37
Gross weight	2.465
Copper weight (kg per piece)	0.046
Customs tariff number	85369095
EAN	4028177674950
ETIM 9	EC001644
ETIM 8	EC001644
ECLASS 8.0	27142120

Approvals

Approvals	ABS DNV-GL Lloyds Register of Shipping
Explanations	Declaration of conformity