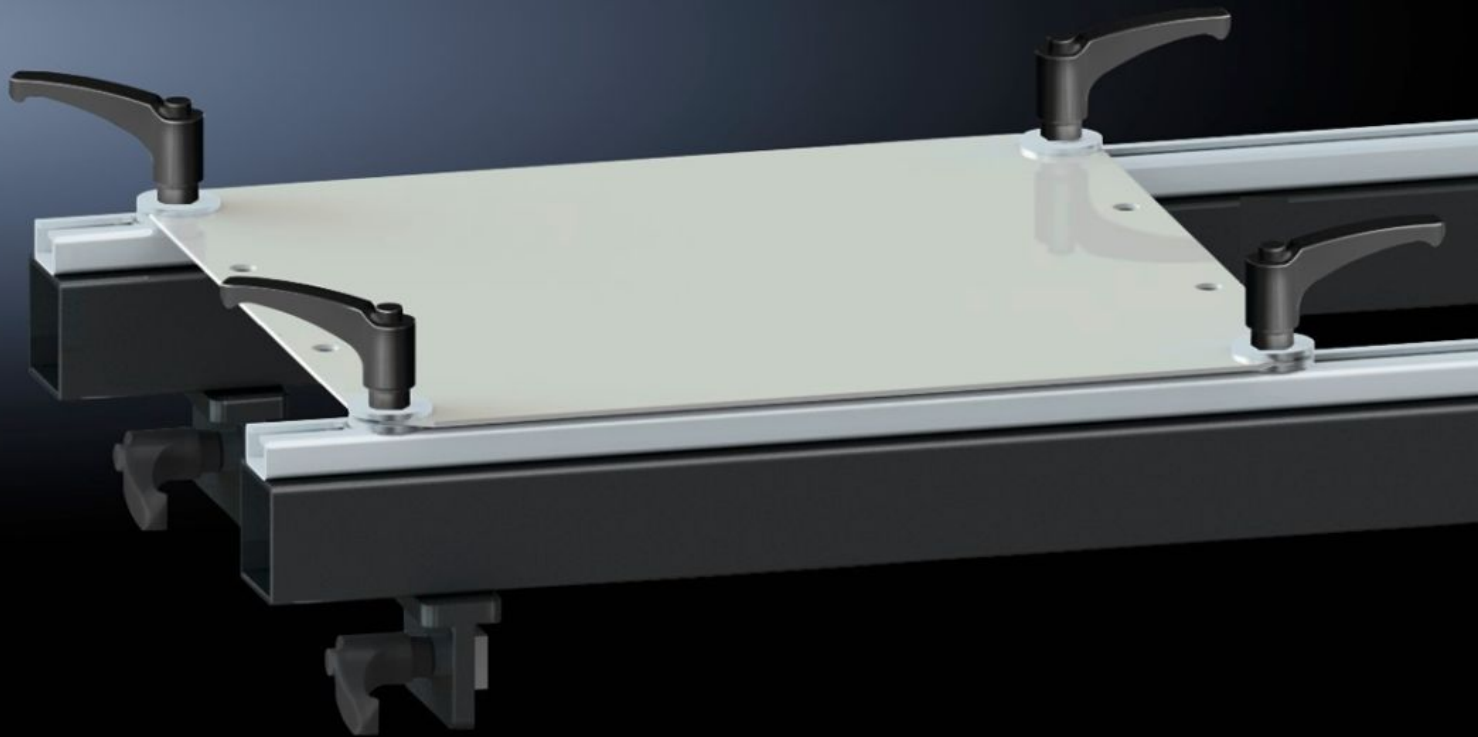


Rittal – The System.

Faster – better – everywhere.



AS 4050.221

Set of brackets

State: 27/05/2026 (Source: rittal.com/ro-ro)

ENCLOSURES

POWER DISTRIBUTION

CLIMATE CONTROL

IT INFRASTRUCTURE

SOFTWARE & SERVICES

FRIEDHELM LOH GROUP



AS 4050.221 - Set of brackets for assembly frame

For secure attachment of a mounting plate onto the assembly frames 150 MN, 200 EN and 300 ENH.

Features

| | |
|-----------------------|---|
| Model No. | AS 4050.221 |
| Product description | For secure attachment of a mounting plate onto the assembly frames 150 MN, 200 EN, 300 ENH. |
| Supply includes | 4 cover caps 12 handles 2 holders 16 washers 12 sliding blocks |
| To fit Model No. | 4050.150 4050.200 4050.300 |
| Packs of | 1 pc(s). |
| Net weight | 15,3 kg |
| Gross weight | 16 kg |
| Customs tariff number | 73269098 |
| ETIM 9 | EC001231 |
| ETIM 8 | EC001231 |
| ECLASS 8.0 | 36659290 |
| Product description | Mounting device AE, for assembly frame |