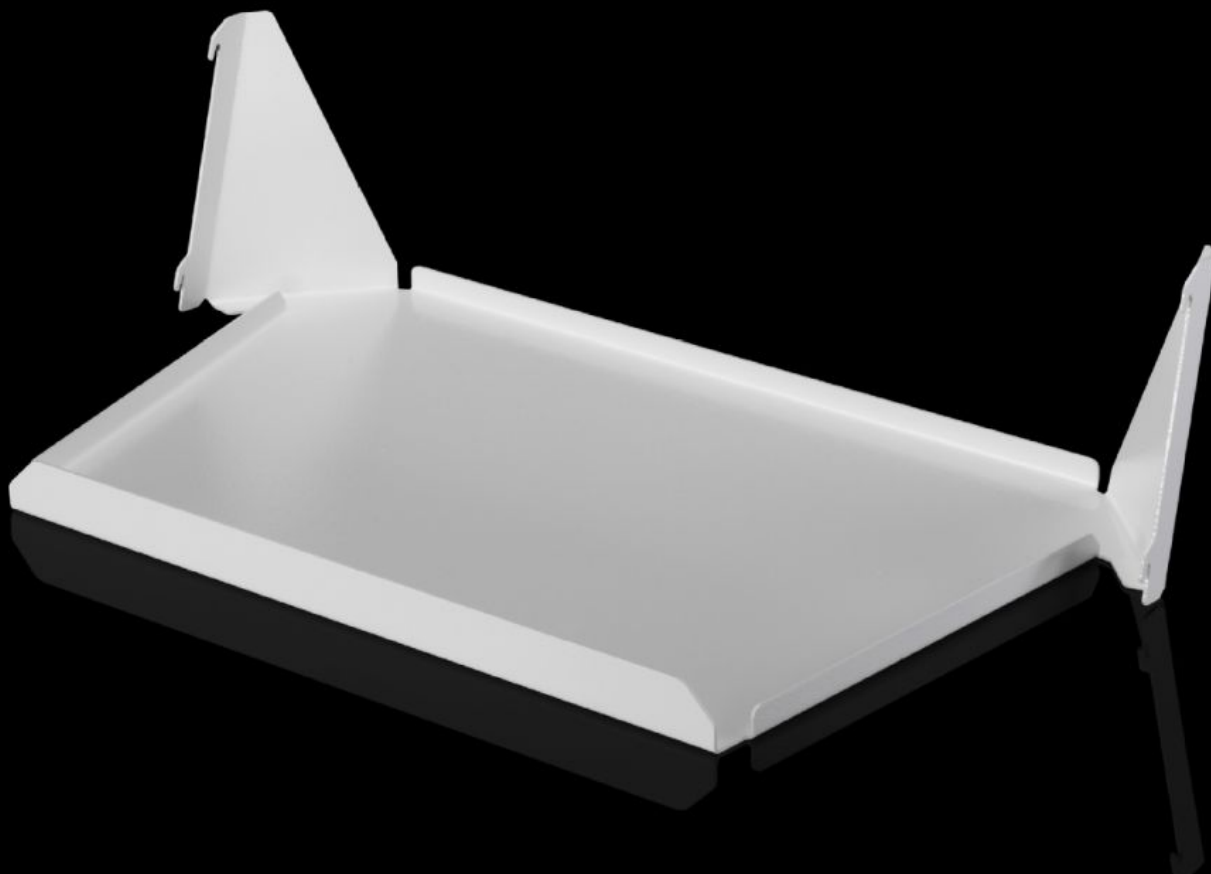


Rittal – The System.

Faster – better – everywhere.



AS 4051.055 Shelf

State: 08/05/2025 (Source: rittal.com/ro-ro)

ENCLOSURES

POWER DISTRIBUTION

CLIMATE CONTROL

IT INFRASTRUCTURE

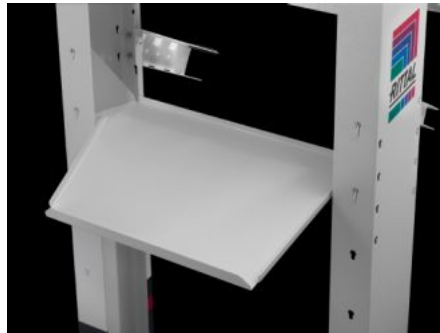
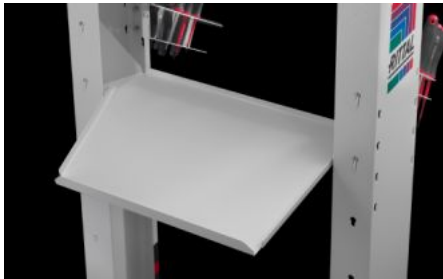
SOFTWARE & SERVICES

FRIEDHELM LOH GROUP



AS 4051.055 - Shelf Wire Cart

Storage shelves, e.g. for storage boxes.



Features

| | |
|--------------------------|--|
| Model No. | AS 4051.055 |
| Product description | Storage shelves, e.g. for storage boxes. |
| Benefits | Careful storage Easy to use |
| Technical specifications | The Wire Cart may be extended to a maximum of three storage shelves Storage boxes with a maximum size of W x H x D: 400 x 150 x 300 mm may be positioned on the storage shelves |
| To fit Model No. | 4051.050 |
| Packs of | 1 pc(s). |
| Net weight | 3 |
| Gross weight | 3.5 |
| Customs tariff number | 94032080 |
| EAN | 4028177960251 |