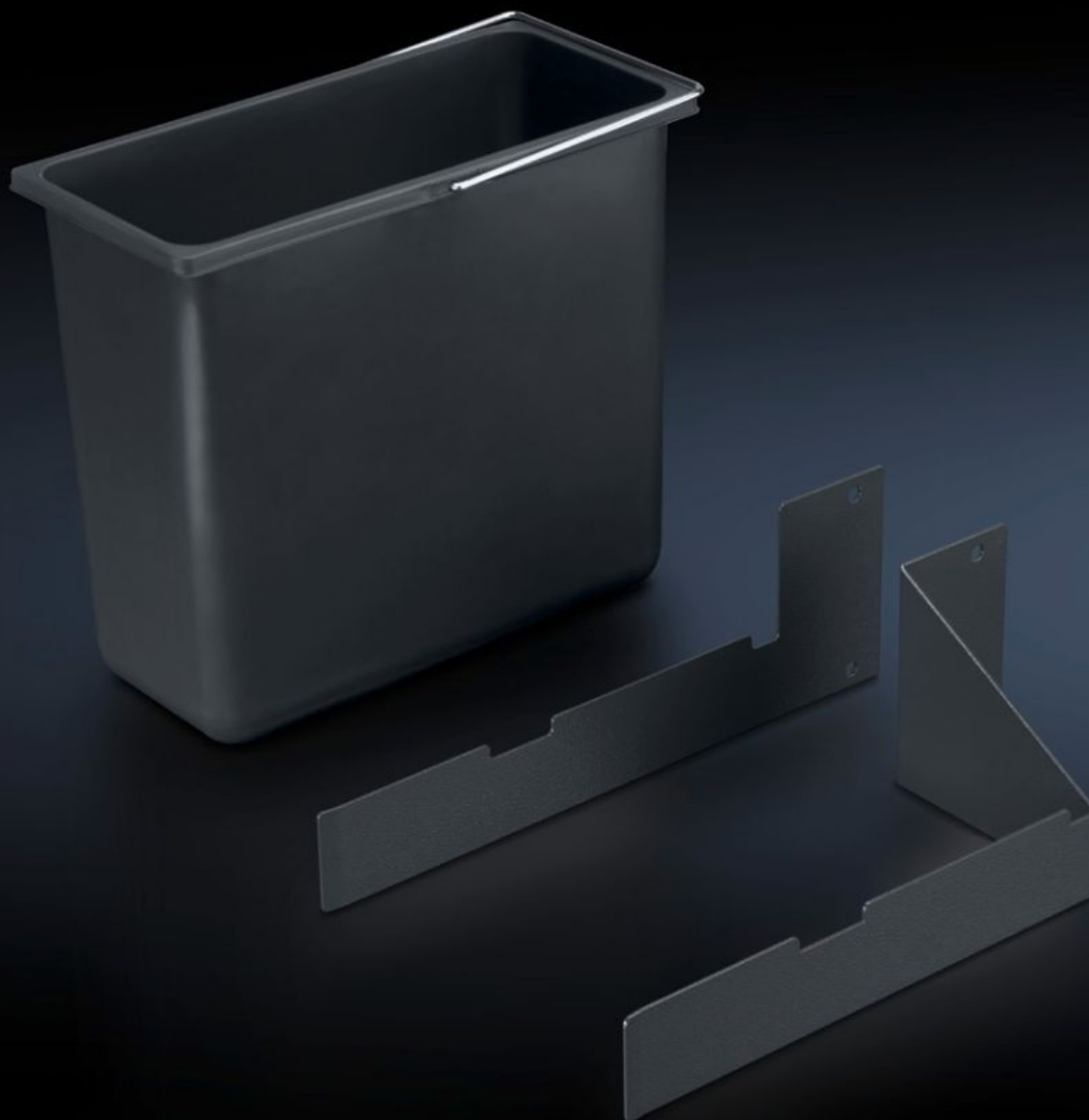
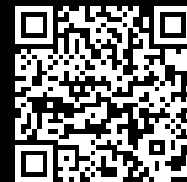


# Rittal – The System.

Faster – better – everywhere.



## AS 4051.115 Waste bin

State: 24/08/2025 (Source: [rittal.com/ro-ro](https://www.rittal.com/ro-ro))

ENCLOSURES

POWER DISTRIBUTION

CLIMATE CONTROL

IT INFRASTRUCTURE

SOFTWARE & SERVICES

FRIEDHELM LOH GROUP



# AS 4051.115 - Waste bin for WS 540

For waste disposal directly at the workstation.



## Features

Model No.	AS 4051.115
Product description	For waste disposal directly at the workstation.
Benefits	Front mounting without impairing legroom
Technical specifications	Dimensions (W x H x D): 150 x 290 x 320 mm Capacity: 12 litres
Material	Plastic
Colour	Dark grey
Supply includes	Waste bin Bracket Assembly parts
To fit Model No.	4051.100
Packs of	1 pc(s).
Net weight	1.4
Gross weight	2.3
Customs tariff number	39211900

# Features

EAN	4028177957503
ETIM 9	EC002778
ETIM 8	EC002778
ECLASS 8.0	36629090