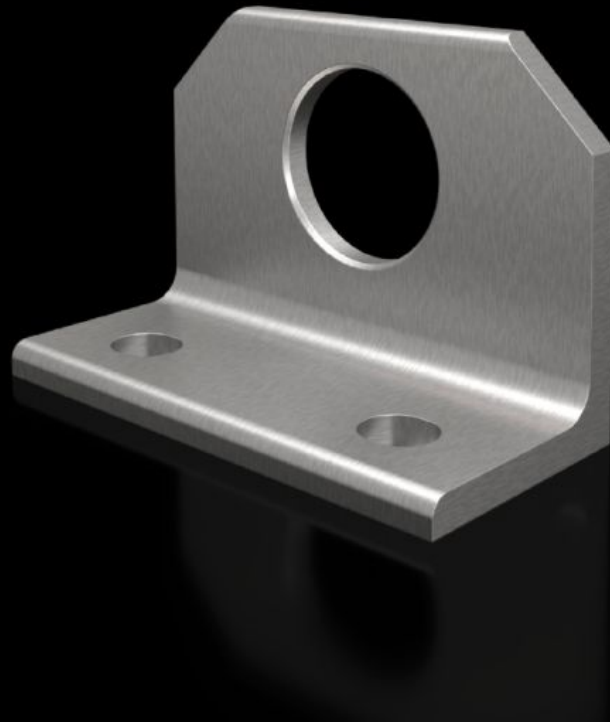


Rittal – The System.

Faster – better – everywhere.



SZ 4540.500 Combination angle

State: 03/05/2026 (Source: rittal.com/ro-ro)

ENCLOSURES

POWER DISTRIBUTION

CLIMATE CONTROL

IT INFRASTRUCTURE

SOFTWARE & SERVICES

FRIEDHELM LOH GROUP



SZ 4540.500 - Combination angle for VX, TS

For optimum distribution of tensile forces during transportation of bayed enclosures by crane.



Features

Model No.	SZ 4540.500
Product description	For optimum distribution of tensile forces during transportation of bayed enclosures by crane.
Material	Stainless steel 1.4301 (AISI 304)
Supply includes	Assembly parts
To fit	Enclosure type: VX TS
Type rating to UL 50E	Type 1 Type 12
Protection category NEMA	NEMA 1, 12
IP protection category to IEC 60529	IP 55
Packs of	2 pc(s).
Net weight	1,2 kg
Gross weight	1,4 kg
PCF per pack (cradle-to-gate)	5.3 kg CO2 eq (Cat B)
Note on PCF category	Category B: PCF value (cradle-to-gate) based on the product weight, approximately calculated and self-declared
Customs tariff number	73182900

Features

ETIM 9	EC002622
ETIM 8	EC002622
ECLASS 8.0	27189234
Product description	SZ combination angle, stainless steel

Approvals

Approvals	UL + C-UL - FTTA
-----------	------------------
