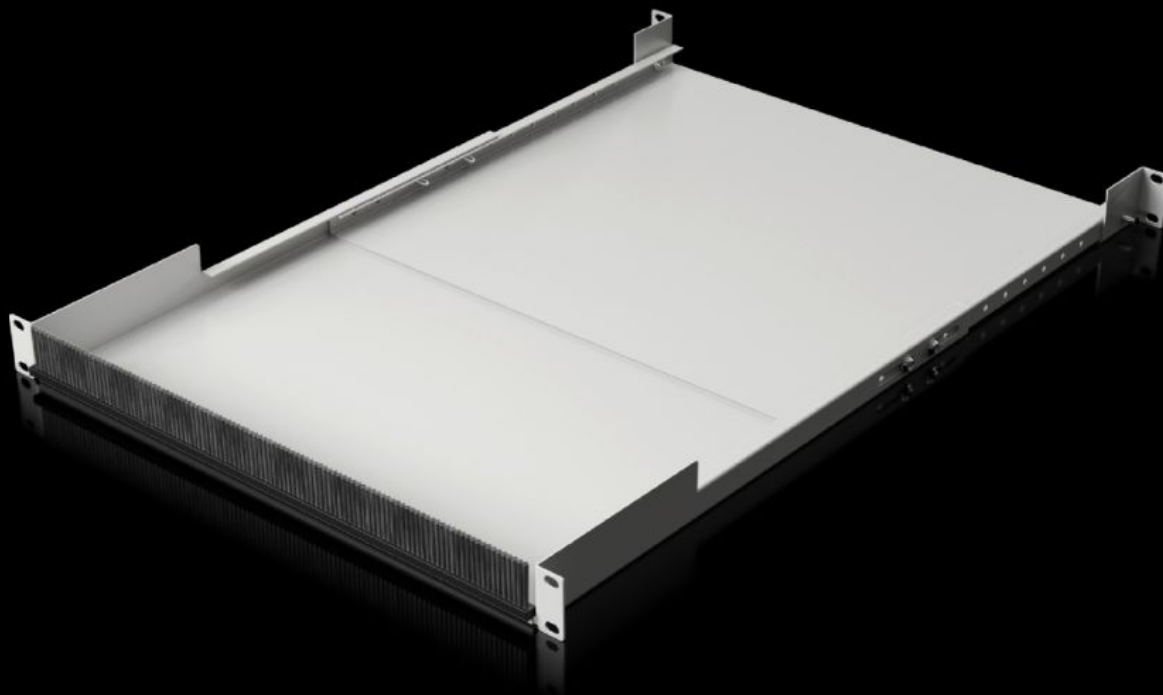
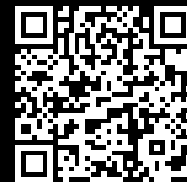


Rittal – The System.

Faster – better – everywhere.



IT 5302.042

482.6 mm (19") cable link, depth-variable

State: 11/02/2026 (Source: rittal.com/ro-ro)

ENCLOSURES

POWER DISTRIBUTION

CLIMATE CONTROL

IT INFRASTRUCTURE

SOFTWARE & SERVICES

FRIEDHELM LOH GROUP



IT 5302.042 - 482.6 mm (19") cable link, depth-variable

Within the 482.6 mm (19") mounting level, the cable link provides an integrated cable routing option between the front and rear mounting levels inside an enclosure.

Features

Model No.	IT 5302.042
Product description	A user-friendly way of creating integrated cable routing between the front and rear 482.6 mm (19") mounting levels within the enclosure.
Benefits	<p>Cable entry at the front via brush strip for thermal partitioning of the cable entry zone</p> <p>Direct cable routing between the patch level and component with rear installation, optimum cable routing with switch mounted at the rear</p> <p>Fully depth-variable with versatile, infinitely adjustable extension of the cable link</p> <p>Prevents incorrect airflow by partitioning the transition</p> <p>Open at the top for easy retrofitting, even with cables already inserted</p> <p>Cable link extendible upwards by 1 U, by using an additional cable entry panel with brush strip</p>
Material	<p>Sheet steel</p> <p>Brush strip: Plastic, UL 94-V0</p>
Surface finish	Spray-finished
Colour	RAL 9005
Supply includes	<p>Cable link</p> <p>Brush strip</p>
Installation options	For attachment between the front and rear 482.6 mm (19") mounting level
Distance between levels	500 - 750 mm
Units	1 U
Load capacity (static)	150 N
To fit	for enclosure-independent mounting

Features

Note	Assembly parts should be ordered separately
Packs of	1 pc(s).
PCF per pack (cradle-to-gate)	PCF-Wert 18,78 kg Co ² e
Customs tariff number	73269098