

# Rittal – The System.

Faster – better – everywhere.



## CP 6112.500 Pillar, small

State: 22/06/2026 (Source: [rittal.com/ro-ro](http://rittal.com/ro-ro))

ENCLOSURES

POWER DISTRIBUTION

CLIMATE CONTROL

IT INFRASTRUCTURE

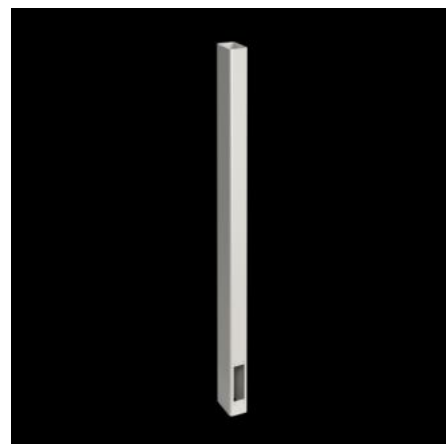
SOFTWARE & SERVICES



FRIEDHELM LOH GROUP

# CP 6112.500 - Pillar, small

Pillars, small, suitable for heavy installed equipment.



## Features

Model No.	CP 6112.500
Product description	The complete welded alternatives to the pedestal. For heavy installed equipment.
Material	Steel
Surface finish	Spray-finished
Colour	RAL 7035
Width base plate	480 mm
Height base plate	12 mm
Depth base plate	480 mm
Material thickness pedestal	4 mm
Pedestal tube cross-section depth	60 mm
Pedestal tube cross-section width	100 mm
Load capacity (static)	80 kg
Dimensions	Height: 1,159 mm
Packs of	1 pc(s).
Net weight	30,5 kg

# Features

---

Gross weight	32 kg
PCF per pack (cradle-to-gate)	131.4 kg CO2 eq (Cat B)
Note on PCF category	Category B: PCF value (cradle-to-gate) based on the product weight, approximately calculated and self-declared
Customs tariff number	73269098
ETIM 9	EC002534
ECLASS 8.0	27182604
Product description	CP Pillar, small, CP 120, WHD: 500x1150x500 mm

---