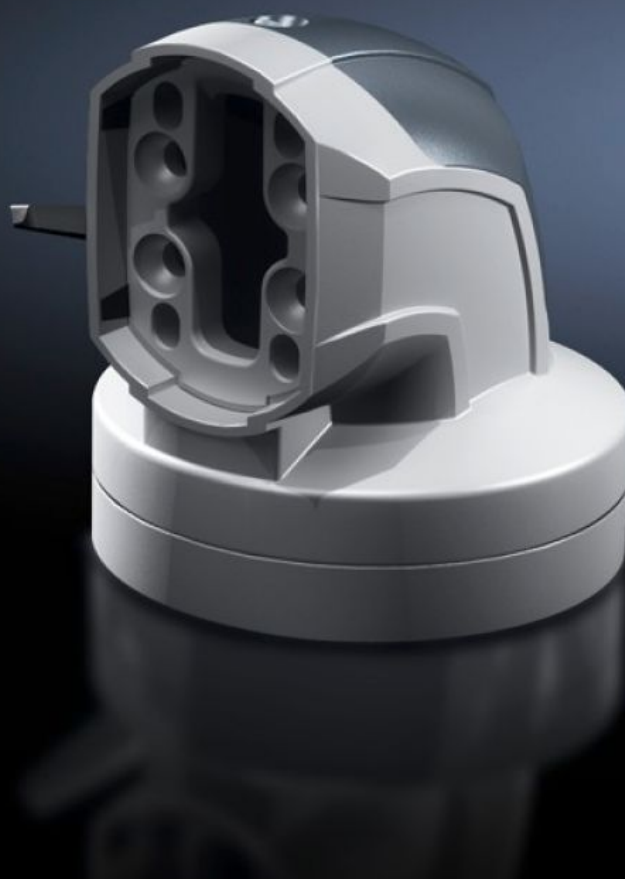
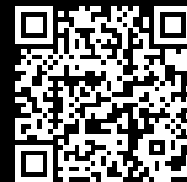


# Rittal – The System.

Faster – better – everywhere.



## CP 6206.380

## Angle coupling 90° CP 60

State: 17/08/2025 (Source: [rittal.com/ro-ro](https://www.rittal.com/ro-ro))

ENCLOSURES

POWER DISTRIBUTION

CLIMATE CONTROL

IT INFRASTRUCTURE

SOFTWARE & SERVICES

FRIEDHELM LOH GROUP



# CP 6206.380 - Angle coupling 90° CP 60 for support arm connection Ø 130 mm

For swivel mounting of the enclosure on the horizontal part of the support arm system. Enclosure may be suspended or top-mounted. Removable cover for simple cable entry.

## Features

Model No.	CP 6206.380
Product description	For swivel mounting of the enclosure on the horizontal part of the support arm system. Enclosure may be suspended or top-mounted. Removable cover for simple cable entry.
Material	Angle coupling: Cast aluminium/die-cast zinc Cover: Plastic
Colour	Angle coupling: RAL 7035 Cover: RAL 7024
Supply includes	Seals Grub screws Adjusting screws Self-tapping screws for support section attachment
Rotating/tilting	Yes
Rotation angle/swivel area	approx. 310°, lockable via clamping levers The range of rotation can be limited by inserting the grub screws provided
Packs of	1 pc(s).
Net weight	1.8
Gross weight	1.953
Customs tariff number	79070000
EAN	4028177684393
ETIM 9	EC000882
ECLASS 8.0	27400556

# Approvals

Explanations

Manufacturer's declaration