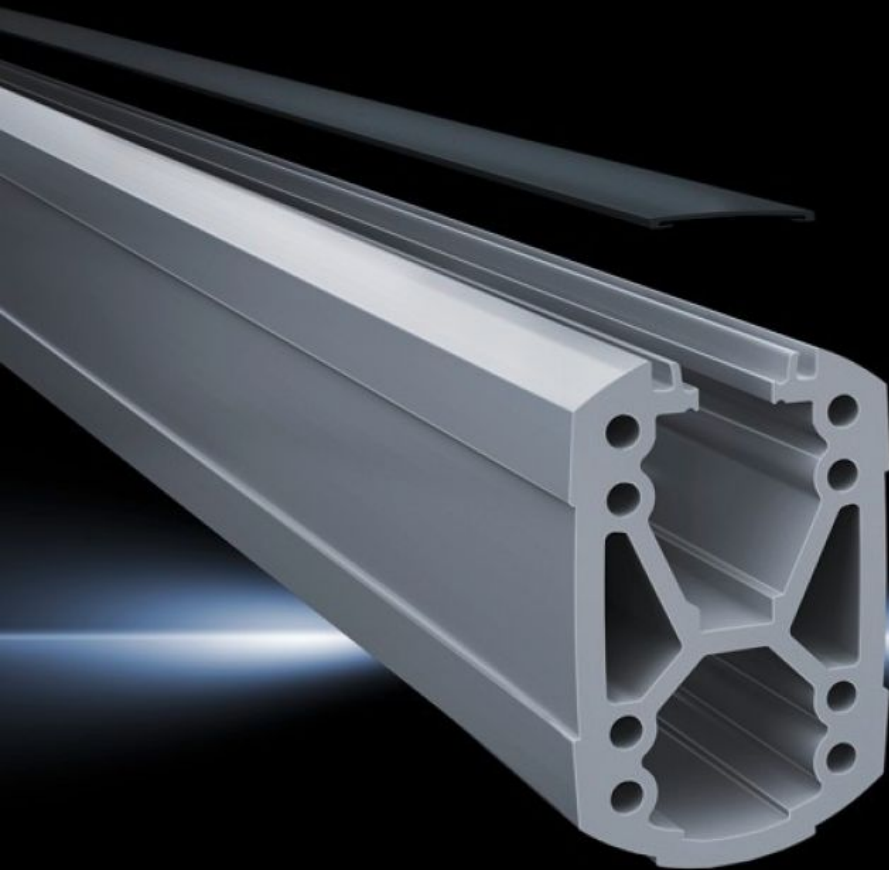


**Rittal – The System.**

Faster – better – everywhere.



**CP 6212.110**

**Support section CP 120**

State: 14/05/2026 (Source: [rittal.com/ro-ro](http://rittal.com/ro-ro))

ENCLOSURES

POWER DISTRIBUTION

CLIMATE CONTROL

IT INFRASTRUCTURE

SOFTWARE & SERVICES

FRIEDHELM LOH GROUP



# CP 6212.110 - Support section CP 120 Open

Attachment to the connection components with 4 self-tapping screws in the screw channel. May be cut to any required length, no thread-tapping required. Open cable duct for easy servicing access and for pre-assembled cables with connectors, lockable via cover section. X-shaped profiling for greater load capacity, large cable routing channels. Upper channel adequate for cables with large connectors (e.g. DVI or VGA) and available/usable throughout the entire system.

## Features

Model No.	CP 6212.110
Product description	Attachment to the connection components with 4 self-tapping screws in the screw channel. May be cut to any required length, no thread-tapping required. Open cable duct for easy servicing access and for pre-assembled cables with connectors, lockable via cover section. X-shaped profiling for greater load capacity, large cable routing channels. Upper channel adequate for cables with large connectors (e.g. DVI or VGA) and available/usable throughout the entire system.
Material	Support section: Extruded aluminium section Cover: Plastic
Colour	Support section: RAL 7035 Cover: RAL 7024
Supply includes	Support section Clip-in lid
Length	1.000 mm
Dimensions	Width: 75 mm Height: 120 mm Length: 1,000 mm
Packs of	1 pc(s).
Net weight	8,997 kg
Gross weight	9,471 kg
Customs tariff number	76042100

# Features

---

ETIM 9	EC000882
ECLASS 8.0	27400556
Product description	CP Support section CP 120, open, L: 1000 mm

---

# Approvals

---

Explanations	Manufacturer's declaration
--------------	----------------------------

---