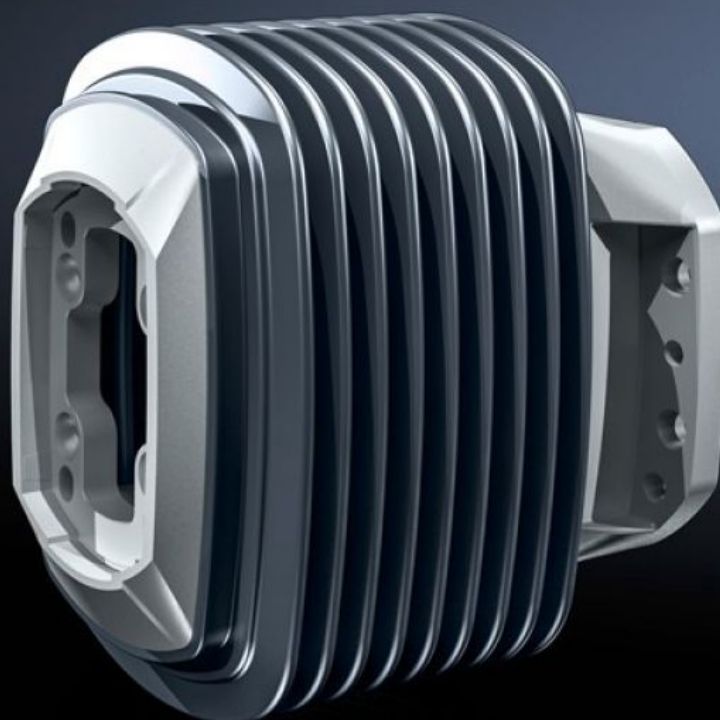
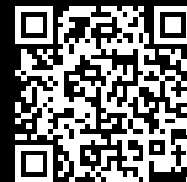


**Rittal – The System.**

Faster – better – everywhere.



**CP 6212.780**

**Wall-mounted hinge CP 120**

State: 03/08/2025 (Source: [rittal.com/ro-ro](https://www.rittal.com/ro-ro))

ENCLOSURES

POWER DISTRIBUTION

CLIMATE CONTROL

IT INFRASTRUCTURE

SOFTWARE & SERVICES

FRIEDHELM LOH GROUP



# CP 6212.780 - Wall-mounted hinge CP 120 Horizontal outlet, without height offset

For swivel mounting of the support arm on vertical surfaces.

## Features

Model No.	CP 6212.780
Product description	For swivel mounting of the support arm on vertical surfaces.
Material	Wall-mounted hinge: Cast steel Concertina section: Plastic
Colour	Wall-mounted hinge: RAL 7035 Concertina section: RAL 7024
Supply includes	Concertina section Screws for restricting rotation range Adjusting screws Self-tapping screws for support section attachment Seals
Rotating/tilting	Yes
Rotation angle/swivel area	approx. 180° Adjustable to a limited extent by means of 2 slotted steel discs
Packs of	1 pc(s).
Net weight	8
Gross weight	8.32
PCF per pack (cradle-to-gate)	31.6 kg CO2 eq (Cat B)
Note on PCF category	Category B: PCF value (cradle-to-gate) based on the product weight, approximately calculated and self-declared
Customs tariff number	73269098
EAN	4028177705616
ETIM 9	EC000882
ECLASS 8.0	27400556

# Approvals

---

Explanations

Manufacturer's declaration