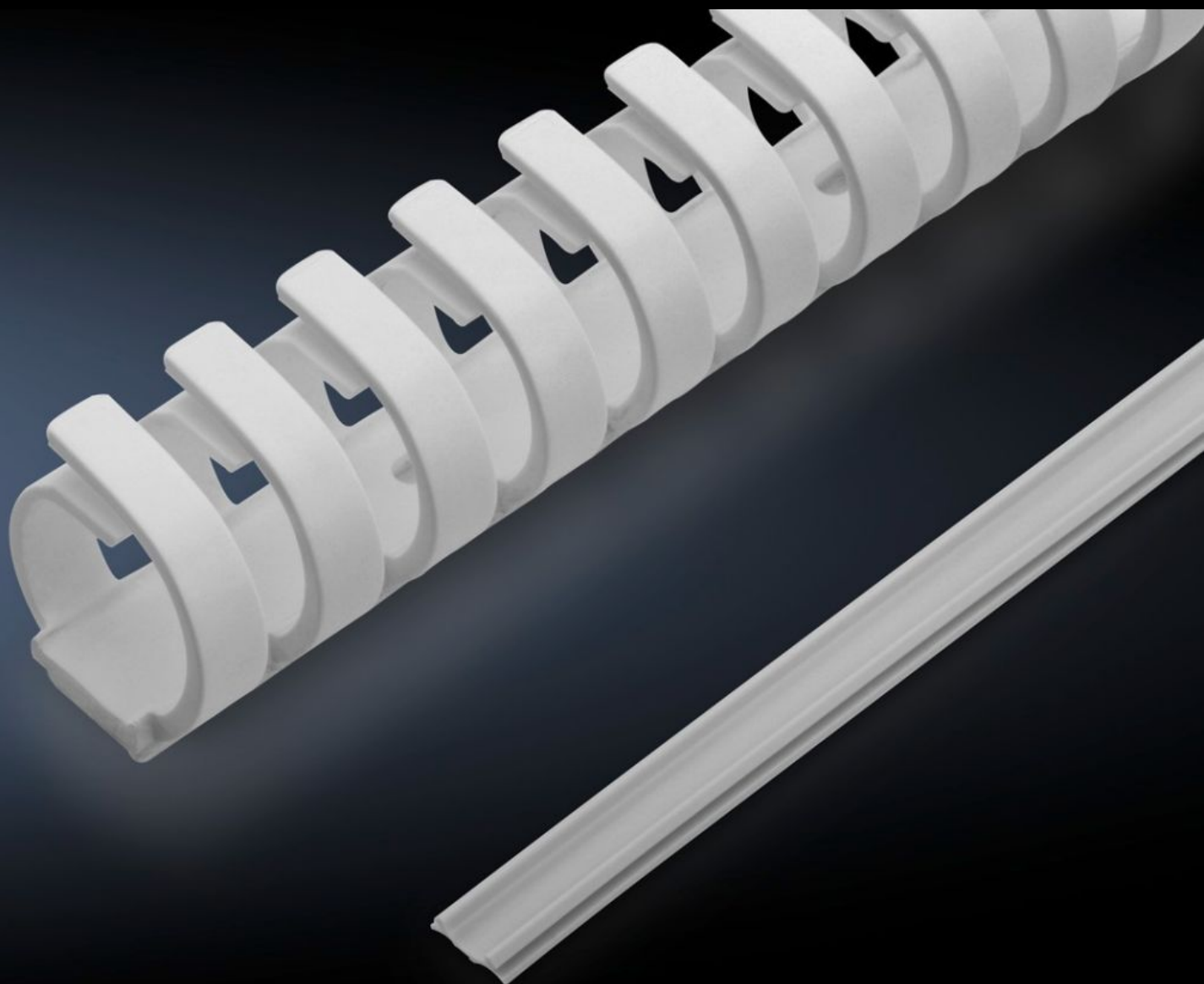


Rittal – The System.

Faster – better – everywhere.



IT 7030.695 Cable routing set, doors

State: 23/08/2025 (Source: [rittal.com/ro-ro](https://www.rittal.com/ro-ro))

ENCLOSURES

POWER DISTRIBUTION

CLIMATE CONTROL

IT INFRASTRUCTURE

SOFTWARE & SERVICES

FRIEDHELM LOH GROUP



IT 7030.695 - Cable routing set, doors for VX, VX IT

For optimised cable routing on the inside of the VX enclosure system doors when using a CMC III handle.

Features

Model No.	IT 7030.695
Product description	For optimised cable routing on the inside of the doors of the VX enclosure system when a CMC III handle is used.
Benefits	Shorten the duct cover and the ring cable holder to any desired length
Function principle	<p>When installing handles or reader units with cables, these will need to be laid close to the inside of the door. The cables are routed in the aluminium extrusion of the doors.</p> <p>To close the duct, the duct cover simply snaps onto the profile</p> <p>For cable routing with ventilated or sheet steel doors, the ring cable holder is glued to the inside of the door</p>
Material	Plastic
Colour	Pale grey
Supply includes	Cable routing set, doors Duct cover, 2 m 4 ring cable holders, 0.5 m Assembly parts
Packs of	1 pc(s).
Net weight	0.202
Gross weight	0.222
Customs tariff number	73269098
EAN	4028177939264
ETIM 9	EC000261
ECLASS 8.0	27180101