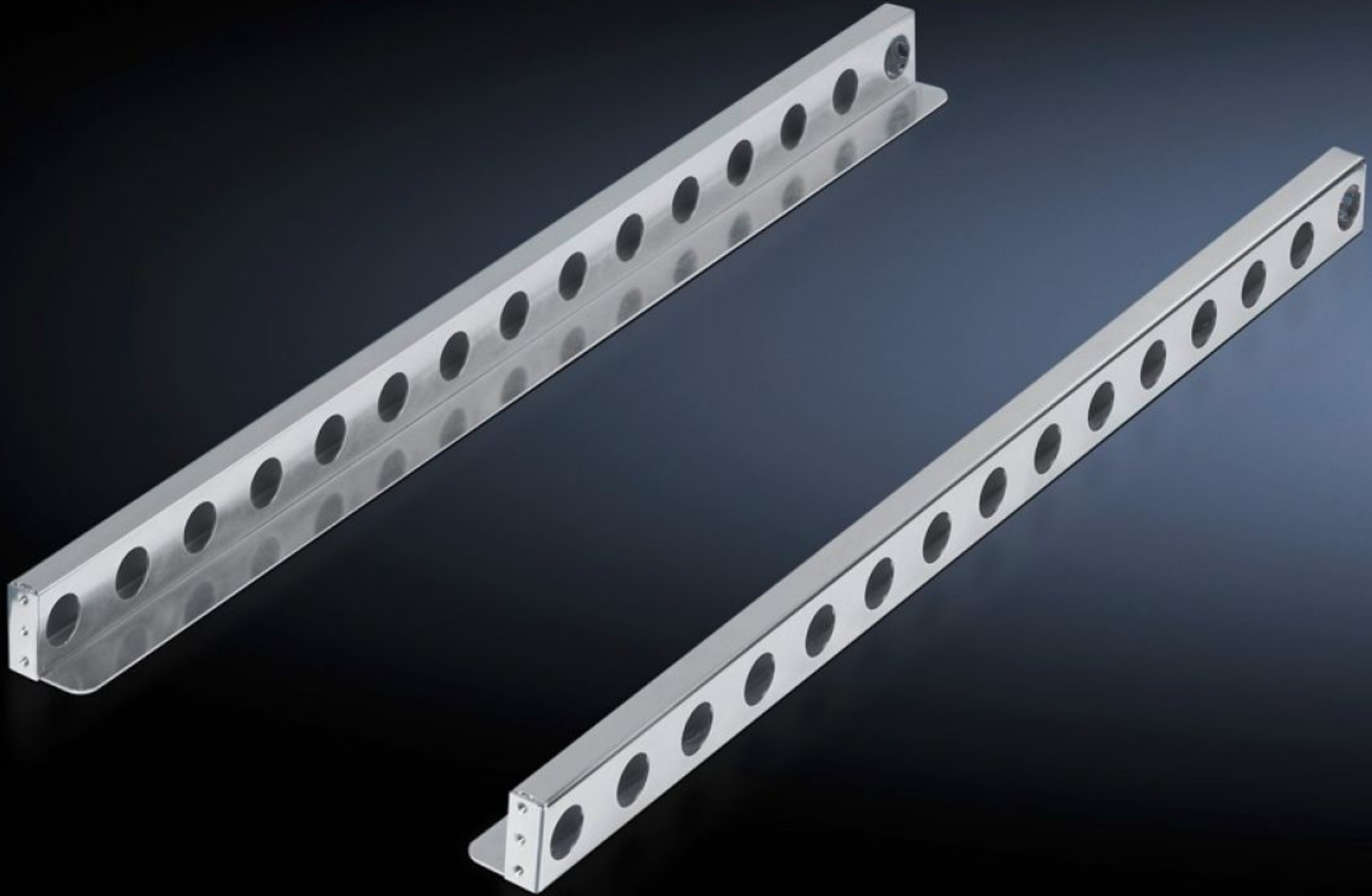


# Rittal – The System.

Faster – better – everywhere.



## DK 7063.740 Slide rail, heavy-duty

State: 06/04/2026 (Source: [rittal.com/ro-ro](http://rittal.com/ro-ro))

ENCLOSURES

POWER DISTRIBUTION

CLIMATE CONTROL

IT INFRASTRUCTURE

SOFTWARE & SERVICES

FRIEDHELM LOH GROUP



# DK 7063.740 - Slide rail, heavy-duty for TE

With L-shaped mounting angles or 482.6 mm (19") mounting frame and a clearance between levels of 745 mm, easily and quickly installed thanks to locating brackets for the rear level.



## Features

Model No.	DK 7063.740
Product description	For L-shaped mounting angles with a preconfigured clearance between levels of 740 mm. Easily and quickly installed due to locating brackets for the rear level.
Material	Sheet steel
Surface finish	Zinc-plated
Supply includes	Assembly parts
Distance between mounting levels	745 mm
Load capacity static	1.000 N
Contact surface	Width: 50 mm Depth: 734 mm
Packs of	2 pc(s).
Net weight	2,71 kg
Gross weight	2,909 kg

# Features

---

Customs tariff number	73269098
ETIM 9	EC002620
ECLASS 8.0	27189261
Product description	DK slide rail, heavy-duty, 1000 N static, for L-shaped mounting angles or 482.6 mm (19") mounting frames and a clearance of 745 mm between levels