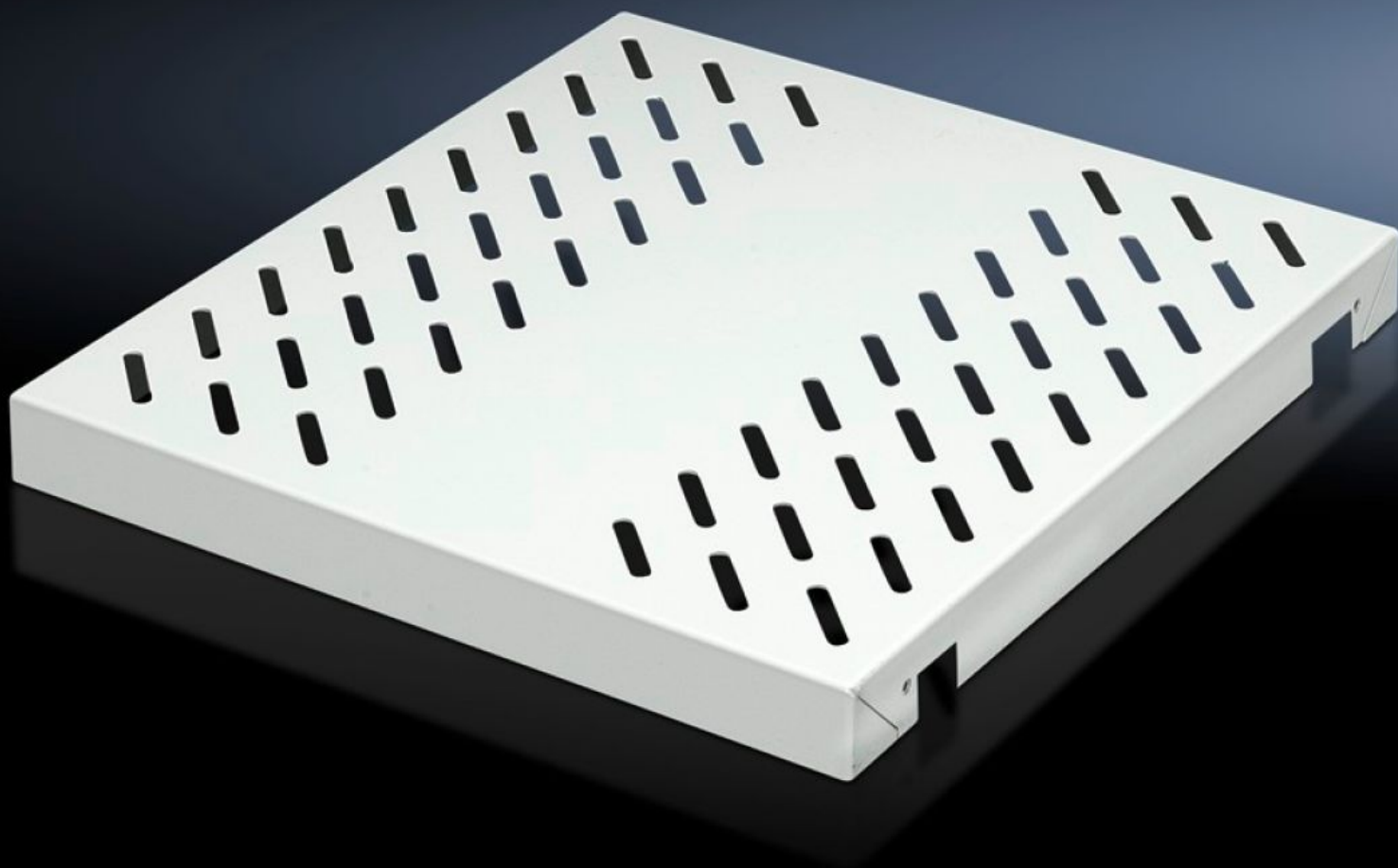
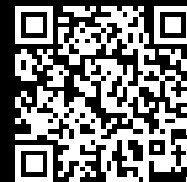


Rittal – The System.

Faster – better – everywhere.



DK 7063.895

Component shelf, heavy duty

State: 07/05/2025 (Source: [rittal.com/ro-ro](https://www.rittal.com/ro-ro))

ENCLOSURES

POWER DISTRIBUTION

CLIMATE CONTROL

IT INFRASTRUCTURE

SOFTWARE & SERVICES

FRIEDHELM LOH GROUP



DK 7063.895 - Component shelf, heavy duty 482.6 mm (19") for TE, TS

For mounting on L-shaped mounting angles and 482.6 mm (19") mounting frame, load capacity: 100 kg.

Features

Model No.	DK 7063.895
Product description	L-shaped mounting angles, 482.6 mm (19") mounting frame
Material	Sheet steel
Colour	RAL 7035
Supply includes	Assembly parts
Load capacity	100 kg area load
Dimensions	Width: 409 mm Height: 45 mm Depth: 500 mm
Packs of	1 pc(s).
Net weight	5.433
Gross weight	5.719
Customs tariff number	94039910
EAN	4028177305595
ECLASS 8.0	27189261

Tender text

482.6 mm (19") heavy duty component shelf

For component shelf D = 500 mm

Material: Sheet steel, spray finished in RAL 7035

Load capacity: 100 kg surface load, static