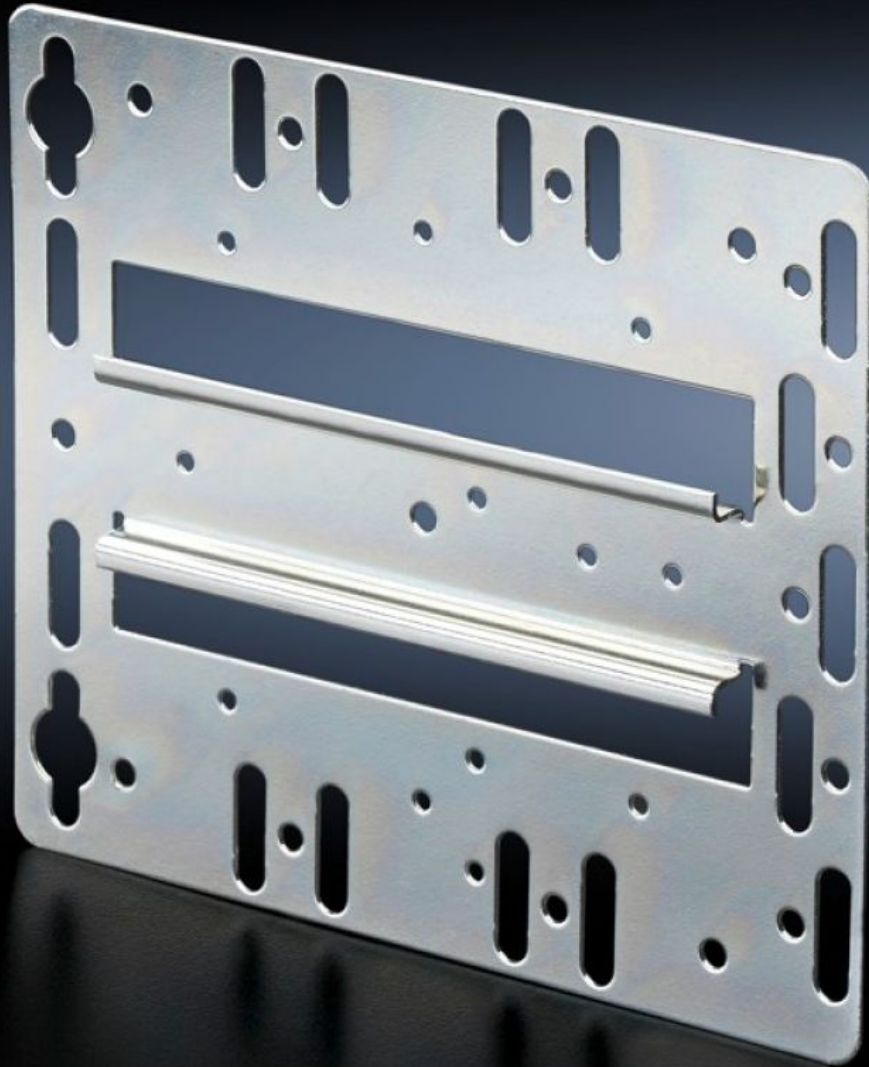


# Rittal – The System.

Faster – better – everywhere.



## TS 7526.964 Mounting plate

State: 07/07/2026 (Source: [rittal.com/ro-ro](http://rittal.com/ro-ro))

ENCLOSURES

POWER DISTRIBUTION

CLIMATE CONTROL

IT INFRASTRUCTURE

SOFTWARE & SERVICES

FRIEDHELM LOH GROUP



# TS 7526.964 - Mounting plate with integral top-hat rail

May be screw-fastened, with integral top-hat rail for direct snap-mounting of components such as speed control, enclosure internal thermostat and hygostat.



## Features

Model No.	TS 7526.964
Product description	For direct snap-mounting of components such as speed control, enclosure internal thermostat and hygostat.
Material	Sheet steel
Surface finish	Zinc-plated
Supply includes	Mounting plate Assembly parts
To fit	Enclosure type: AX VX VX SE AX IT VX IT TE
Packs of	1 pc(s).
Net weight	0,196 kg
Gross weight	0,206 kg
PCF per pack (cradle-to-gate)	0.8 kg CO2 eq (Cat B)

# Features

Note on PCF category	Category B: PCF value (cradle-to-gate) based on the product weight, approximately calculated and self-declared
Customs tariff number	83024200
ETIM 9	EC000213
ECLASS 8.0	27189234
Product description	TS 8 mounting plate with integral top-hat rail for direct snap-mounting of components, for AX, VX, VX SE, AX IT, VX IT, TE, sheet steel, zinc-plated

## Tender text

Mounting plate with integral top-hat rail  
Material: Sheet steel, zinc-plated, passivated