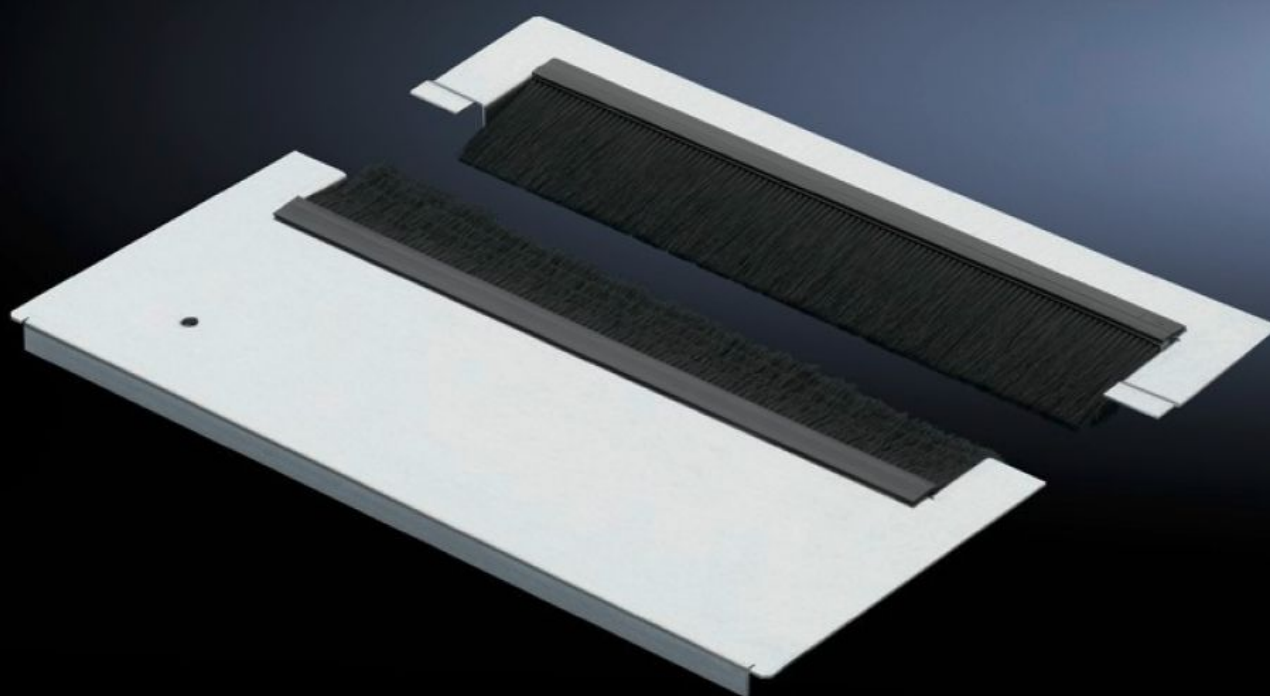
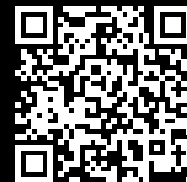


**Rittal – The System.**

Faster – better – everywhere.



**TS 7825.387**

**Gland plate modules for cable entry**

State: 15/08/2025 (Source: [rittal.com/ro-ro](https://www.rittal.com/ro-ro))

ENCLOSURES

POWER DISTRIBUTION

CLIMATE CONTROL

IT INFRASTRUCTURE

SOFTWARE & SERVICES

FRIEDHELM LOH GROUP



# TS 7825.387 - Gland plate modules for cable entry for TS, TS IT, VX SE

The two-part base module has a special cable entry with alternate offset brush strips which guarantee an excellent seal even with large cable quantities.



## Features

Model No.	TS 7825.387
Design	Cable entry with brush strip, super-airtight
Product description	Special brush strips with brush strips offset on alternate sides offer maximum possible protection with professional cable entry. The two-piece design even allows retrospective fitting of the base module with the cables already installed.
Material	Module plate: Sheet steel Brush strip: Plastic, UL 94 HB, halogen-free
Surface finish	Module plate: Zinc-plated
Supply includes	Assembly parts Including clips
Note	Several gland module plates need to be combined to close off the base completely in the TS-IT
Dimensions	Depth: 237.5 mm
To fit	Enclosure type: TS TS IT SE Width: 800 mm
Packs of	1 pc(s).

# Features

Net weight	1.811
Gross weight	1.9
Customs tariff number	73269098
EAN	4028177551169
ETIM 9	EC002620
ECLASS 8.0	27189261

## Tender text

TS 8 / FR(i) base module

For use in the base frame of the enclosure frame.

Module depth 238 mm, can be exchanged for base module of the same dimensions

Base module can be used in enclosures of depth 600, 800, 900, 1,000 and 1,200 mm.

The base module has a large opening for cable entry into the enclosure. The base plate is divided in two and can thus be taken out at any time for more straightforward assembly during installation work, even for already existing pre-installation. The entry opening has special brush strips on both sides which are mutually offset and thus make efficient sealing off of the inner area from the surrounding area possible even for larger amounts of cables.

Material: Sheet steel

For enclosure width: 800 mm