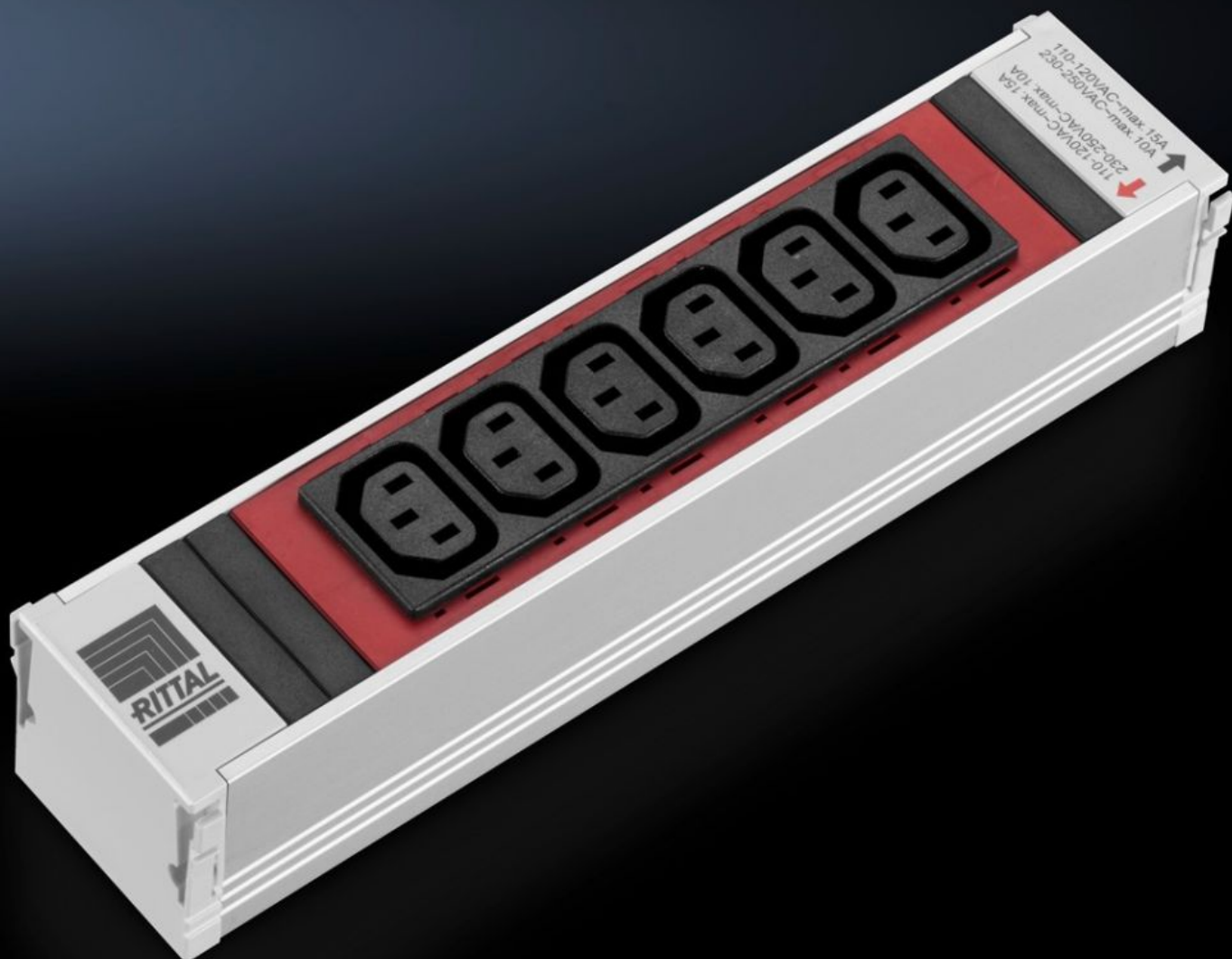


Rittal – The System.

Faster – better – everywhere.



DK 7856.082 PSM socket modules

State: 26/07/2025 (Source: rittal.com/ro-ro)

ENCLOSURES

POWER DISTRIBUTION

CLIMATE CONTROL

IT INFRASTRUCTURE

SOFTWARE & SERVICES

FRIEDHELM LOH GROUP



DK 7856.082 - PSM socket modules

The various modules may be inserted into the support rail in any combination.

Features

Model No.	DK 7856.082
Design	non-switchable
Product description	The modular system facilitates basic configuration of the racks, thanks to a vertical support rail with single-/3-phase infeed. The various socket modules to supply the active components may be snap-fitted into the support rail. The various modules, earthing pins, IEC320 etc. may be inserted into the support rail in any combination. This is easily achieved, even by non-electricians, thanks to the shock hazard protected plug & play system.
Material	Section: Aluminium, anodised Socket inserts: Plastic (PA6 GF 30 V1)
Length	250 mm
Type of electrical connection	WAGO WINSTA MIDI
Phases per infeed	1~
Thermal overcurrent protection	–
Rated operating voltage	110 V – 230 V AC, 50/60 Hz
Rated current (max.)	16 A
Required number of module slots	1
Dimensions	Length: 250 mm
Operating temperature range	5 °C...45 °C
Ambient humidity (non-condensing)	5...95 %
Sockets	6 x IEC 320 socket, C13, red
Packs of	1 pc(s).
Net weight	0.33

Features

Gross weight	0.338
Customs tariff number	85369001
EAN	4028177520318
ETIM 9	EC000330
ECLASS 8.0	27142604

Approvals

Approvals	IEC CB VDE
Explanations	Declaration of conformity

Tender text

Power System Module plug-in module, red 6 x ICE,
IEC 320 C13

Installation via the plug & play system:

The plug-in module is locked into the power system module busbar. It can be locked in or unlocked whilst working. The module connection direction determines which power supply will be used.

A mixture of all of the modules can be fitted in the busbar.

Technical fittings:

The plug-in module has 6 x IEC320 C13 sockets available for use. The module does not have an integrated fuse.

Technical specifications:

Single-phase voltage range: 110V - 230V AC 50/60 Hz,
neutral conductor is required

Max. current per module: 10A at 230V AC, 15A at 110V AC

Temperature application range: +5°C - +45°C

Humidity range: 5% - 95% relative humidity,
non-condensing

Protection category IP20

W x H x D [mm]: 50 x 250 x 45