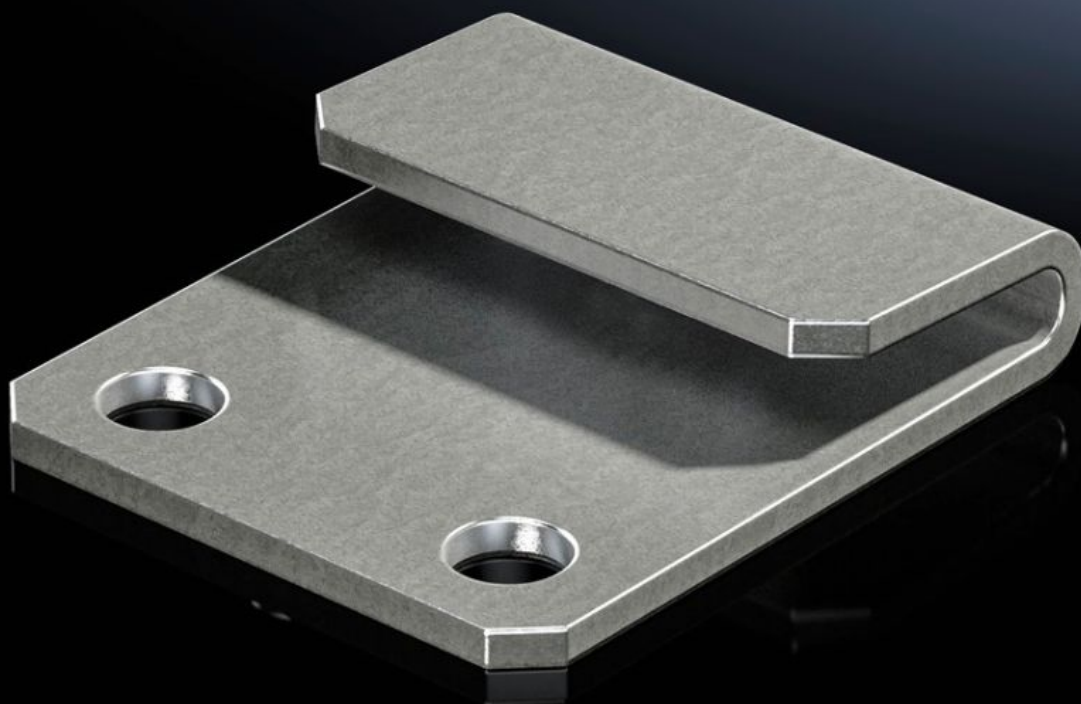
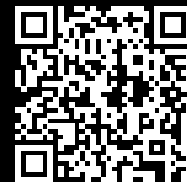


**Rittal – The System.**

Faster – better – everywhere.



**VX 8617.352**

**Mounting plate attachment**

State: 16/07/2025 (Source: [rittal.com/ro-ro](https://www.rittal.com/ro-ro))

ENCLOSURES

POWER DISTRIBUTION

CLIMATE CONTROL

IT INFRASTRUCTURE

SOFTWARE & SERVICES

FRIEDHELM LOH GROUP



# VX 8617.352 - Mounting plate attachment Type C, for VX

For additional clamping and to reduce potential vibration of the mounting plate.



## Features

Model No.	VX 8617.352
Product description	For additional clamping and to reduce potential vibration of the mounting plate.
Benefits	Simple mounting directly on the enclosure frame
Function principle	<p>The mounting plate may be form-fit connected and clamped with the mounting plate attachment.</p> <p>Keeps the front of the mounting plate completely free for unrestricted use</p> <p>With a populated mounting plate and a dismantled rear panel, may be fitted from the rear</p>
Material	Sheet steel
Surface finish	Zinc plated, passivated
Supply includes	Assembly parts
Packs of	10 pc(s).
Net weight	0.5
Gross weight	0.52
PCF per pack (cradle-to-gate)	2.3 kg CO2 eq (Cat B)
Note on PCF category	Category B: PCF value (cradle-to-gate) based on the product weight, approximately calculated and self-declared
Customs tariff number	73269098

# Features

EAN	4028177927063
ETIM 9	EC002620
ECLASS 8.0	27189261